

# GT WALSHEIM

---

G K

---

## About

Inspired by the lettering of Swiss poster designer legend Otto Baumberger from the 1930s, GT Walsheim is a friendly but precise typeface. Unlike other geometric sans-serifs, it sports warm curves and wears a broad smile.

Designed by  
Noël Leu (Grilli Type)

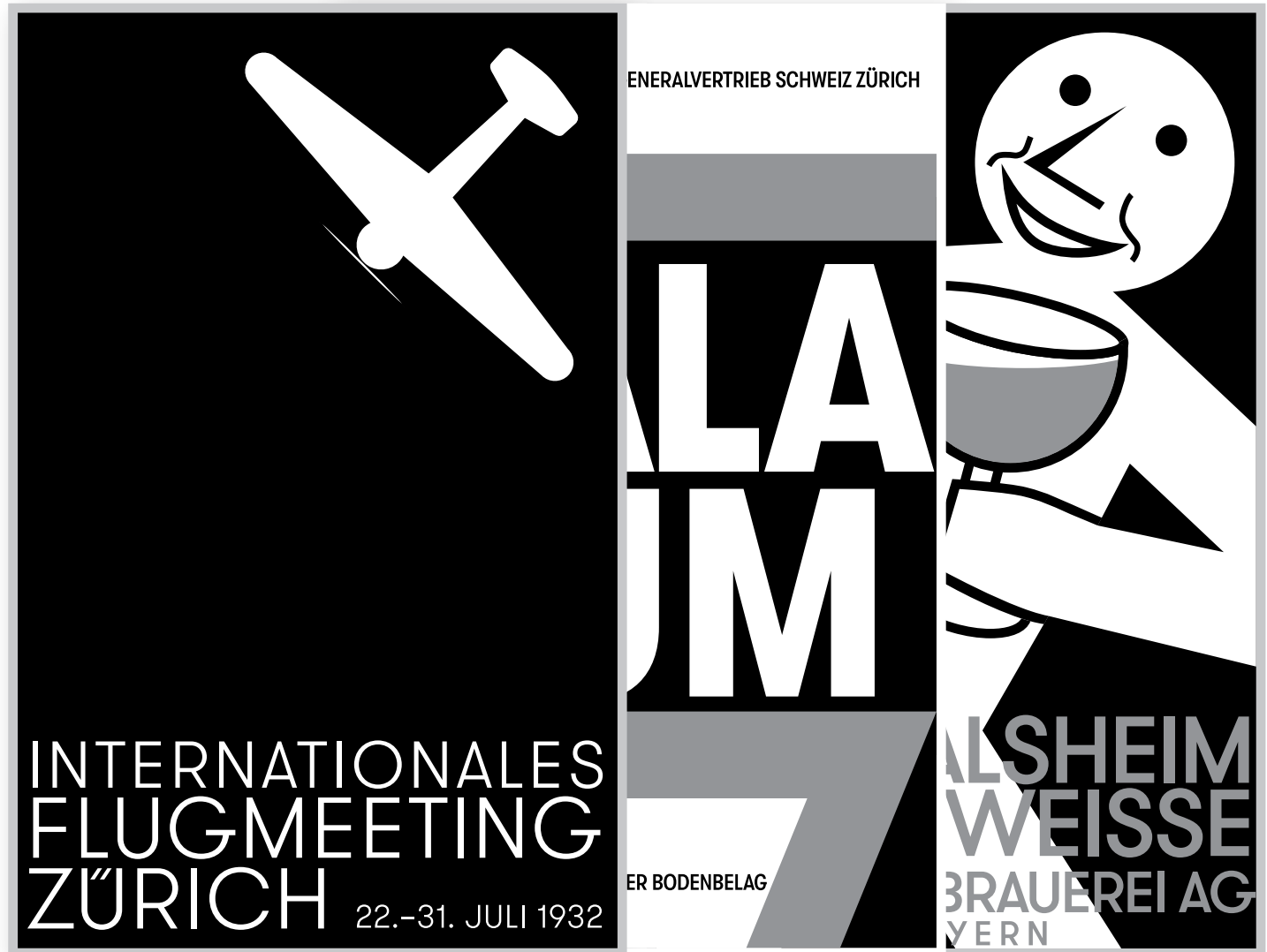
Details  
Released 2011 / 2014 / 2017  
Available in 32 Styles  
For Desktop, Web, App Licensing

# Grilli Type

Walsheim	Standard	Oblique	Pro Standard	Pro Oblique	Walsheim	Condensed	Cond Oblique	Pro Condensed	Pro Cond Oblique
Ultra Light	Aa	<i>Aa</i>	Яя	<i>Яя</i>	Ultra Light	Aa	<i>Aa</i>	Яя	<i>Яя</i>
Thin	Bb	<i>Bb</i>	Бб	<i>Бб</i>	Thin	Bb	<i>Bb</i>	Бб	<i>Бб</i>
Light	Cc	<i>Cc</i>	Зз	<i>Зз</i>	Light	Cc	<i>Cc</i>	Зз	<i>Зз</i>
Regular	Dd	<i>Dd</i>	Дд	<i>Дд</i>	Regular	Dd	<i>Dd</i>	ДД	<i>ДД</i>
Medium	Ee	<i>Ee</i>	Лл	<i>Лл</i>	Medium	Ee	<i>Ee</i>	ЛЛ	<i>ЛЛ</i>
Bold	<b>Ff</b>	<i><b>Ff</b></i>	<b>Фф</b>	<i><b>Фф</b></i>	Bold	<b>Ff</b>	<i><b>Ff</b></i>	<b>ФФ</b>	<i><b>ФФ</b></i>
Black	<b>Gg</b>	<i><b>Gg</b></i>	<b>Кк</b>	<i><b>Кк</b></i>	Black	<b>Gg</b>	<i><b>Gg</b></i>	<b>КК</b>	<i><b>КК</b></i>
Ultra Bold	<b>Hh</b>	<i><b>Hh</b></i>	<b>Чч</b>	<i><b>Чч</b></i>	Ultra Bold	<b>Hh</b>	<i><b>Hh</b></i>	<b>ЧЧ</b>	<i><b>ЧЧ</b></i>

Background

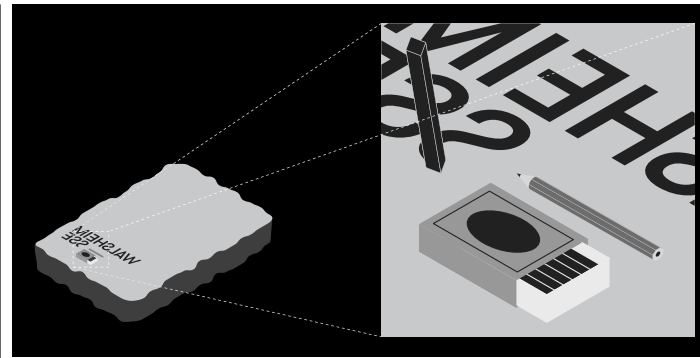
GT Walsheim is based on the hand-painted poster lettering of Swiss poster artist legend Otto Baumberger. He designed posters for politics, commerce, and culture. As a pioneer of what later became the Swiss Style, he created simple, visually striking motives that showed the subject matter at hand.



Development

Otto Baumberger created his posters by hand, drawing each color separately with chalk on a lithography stone. Those layers were then printed on top of each other, creating for the time extremely colorful, striking posters.

Process



1.



2.



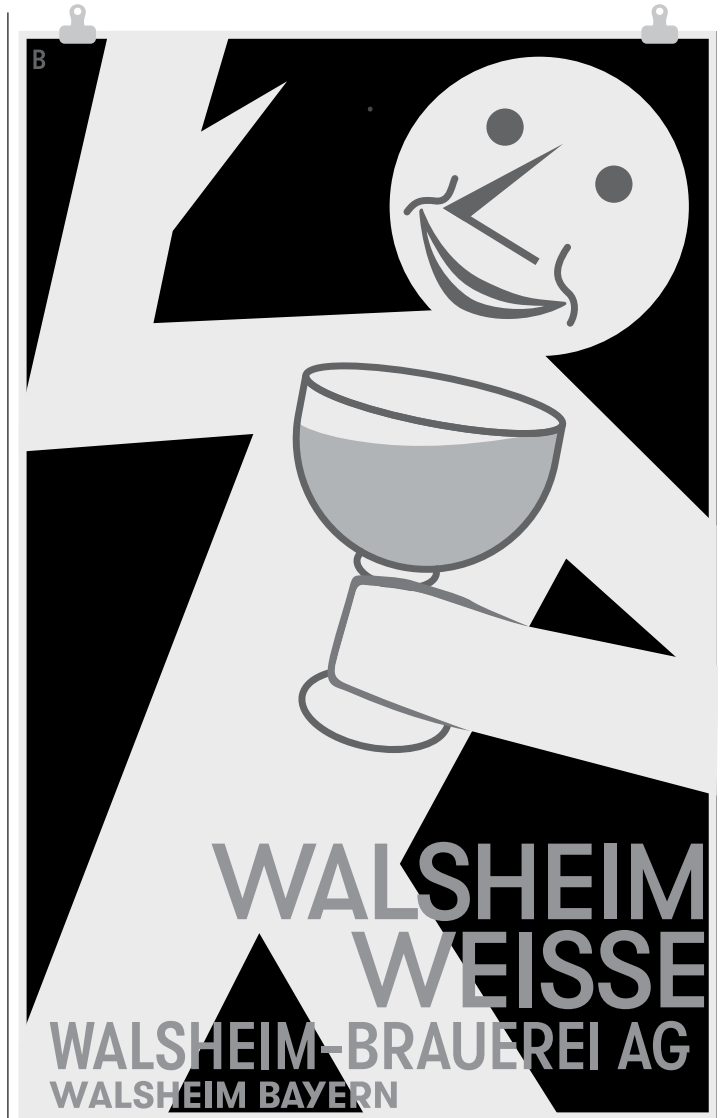
3.



4.



Result



# Grilli Type

Family

Uppercase

Lowercase

450pt  
Ultra Bold  
Bold  
Ultra Light

The height of the lowercase (x-height) grows with the overall boldness of each style. This creates enough room for even very bold weights.



# Grilli Type

Family

Ultra Light

Bold

Ultra Bold

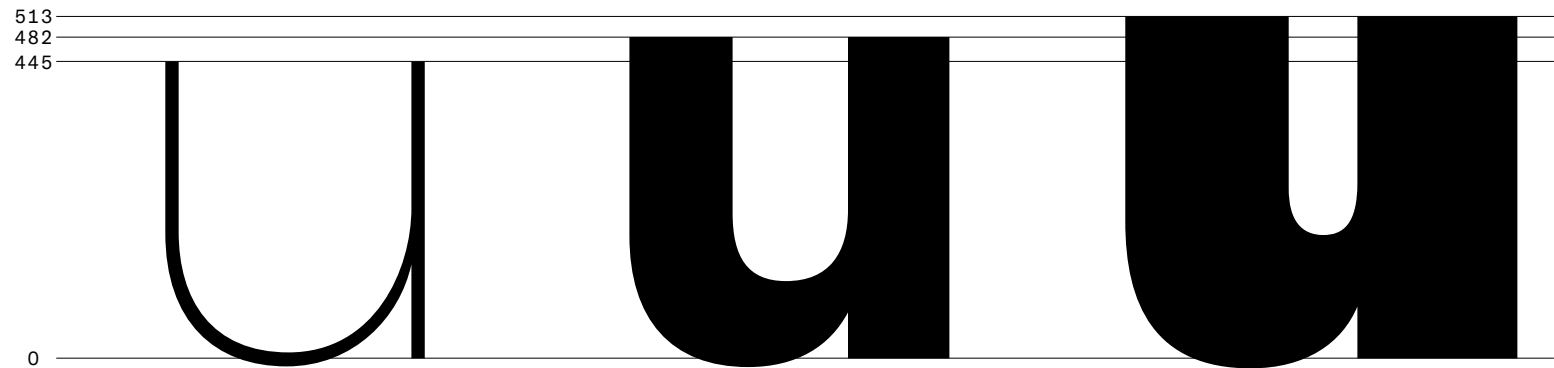
80pt

The difference between thick and thin strokes becomes more extreme for bolder styles.



200pt

The x-height grows with the weights to create enough room for the very bold letters and create a balanced look with the capital letters.



8pt / 10pt

All styles are balanced and have a even texture.

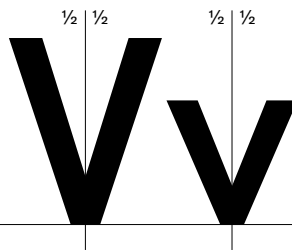
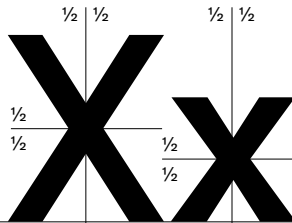
Rate odi nulparc hillecto tem verum, ea nit litaerunto il is elessimusam volores dolorib usanita speribus, cum estionsequi odi auditat empersp ernatur, vellit es nat. Min et ommodis que sin et vendis alicit, am, ommoloritae labo. Ut quia dolo bea quam, totaturibus unto velluptat. Gent. Sunt, officia nobissi musapietum, sundunt. Ceaquist eatiniendit voluptatque Ceaquist eatiniendit voluptatque nobissi musapietum, sundunt. Ceaquist eatiniendit voluptatque Ceaquist eatiniendit voluptatqueDelicias debis aut doluptate lautem ne voluptas quiatur, sunti consequamet pellan-

**Rate odi nulparc hillecto tem verum, ea nit litaerunto il is elessimusam volores dolorib usanita speribus, cum estionsequi odi auditat empersp ernatur, vellit es nat. Min et ommodis que sin et vendis alicit, am, ommoloritae labo. Ut quia dolo bea quam, totaturibus unto velluptat. Gent. Sunt, officia nobissi musapietum, sundunt. Ceaquist eatiniendit voluptatque Ceaquist eatiniendit voluptatque nobissi musapietum, sundunt. Ceaquist eatiniendit voluptatque Ceaquist eatiniendit voluptatque nobissi musapietum, sundunt. Ceaquist eatiniendit voluptatque Ceaquist**

**Rate odi nulparc hillecto tem verum, ea nit litaerunto il is elessimusam volores dolorib usanita speribus, cum estionsequi odi auditat empersp ernatur, vellit es nat. Min et ommodis que sin et vendis alicit, am, ommoloritae labo. Ut quia dolo bea quam, totaturibus unto velluptat. Gent. Sunt, officia nobissi musapietum, sundunt. Ceaquist eatiniendit voluptatque nobissi musapietum, sundunt. Ceaquist eatiniendit voluptatque nobissi musapietum, sundunt. Ceaquist eatiniendit voluptatque Ceaquist**

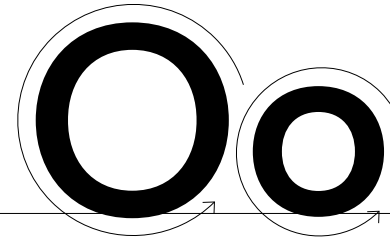
Anatomy

Symmetrical design principle



AKkVvWw

Circular Forms

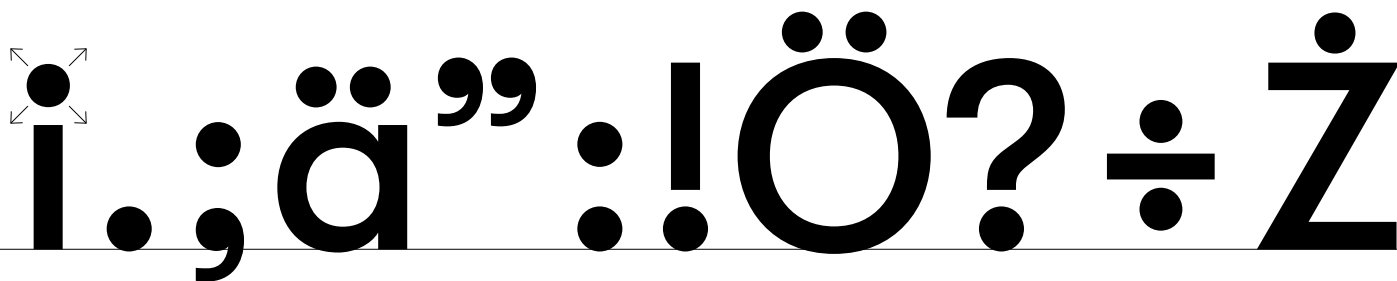


ODCG

oRSUJ38

oab5gy

Big dots



Stylistic Alternates OFF

Stylistic Set SS01

Yearly

---

Stylistic Set SS02

Youth

---

Stylistic Set SS03

Eager

---

Stylistic Set SS04

Stylish

---

Stylistic Alternates ON

Stylistic Set SS01

Yearly

---

Stylistic Set SS02

Youth

---

Stylistic Set SS03

Eager

---

Stylistic Set SS04

Stylish

---



Language Feature OFF

Language Feature ON

---

Bulgarian

Любов

---

Любов

---

Bulgarian

Душа

---

Душа

---

Bulgarian

Флаг

---

Флаг

---

Serbian and Macedonian

Србија

---

Србија

---

Д → Д Л → Л в → в г → г д → д

---

ж → ж з → з и → и й → й

---

к → к л → л т → т п → п

---

ц → ц ш → ш щ → щ ю → ю

---

## Grilli Type

### OpenType Features

Tabular Lining Numbers	<b>4.2.2013</b> 1.1.2014	<b>4.2.2013</b> 1.1.2014
Slashed zero	<b>0</b>	<b>0</b>
Automatic fractions	<b>3/4 x 13/77</b>	<b>¾ x 13/77</b>
Superscript Subscript Superior	<b>Note<sup>1</sup></b> <b>H<sub>2</sub>O</b> <b>13 (2<sup>x</sup>+8<sup>y</sup>)</b>	<b>Note<sup>1</sup></b> <b>H<sub>2</sub>O</b> <b>13 (2<sup>x+2xy</sup>+8<sup>y</sup>)</b>
Capital spacing	<b>CAPITAL</b>	<b>CAPITAL</b>
Case sensitive forms	<b>¿QUE?</b> <b>(SECTRA)</b> <b>23+4=27</b>	<b>¿QUE?</b> <b>(SECTRA)</b> <b>23+4=27</b>

### Alternates

Stylistic set SS01 Y, a, y	<b>Yearly</b>	<b>Yearly</b>
Stylistic set SS02 Y	<b>Youth</b>	<b>Youth</b>
Stylistic set SS03 a	<b>Walsheim</b>	<b>Walsheim</b>
Stylistic set SS04 y	<b>Style</b>	<b>Style</b>
Stylistic set SS05 Ă, Ț, Ȑ, Ț	<b>Ăgeri</b> <b>Österreich</b> <b>Üetliberg</b> <b>Ěndě</b>	<b>Ăgeri</b> <b>Österreich</b> <b>Üetliberg</b> <b>Ěndě</b>
Language Feature Romanian Moldavian	<b>și societății</b> <b>și societății</b> <b>ȘI SOCIETĂȚII</b>	<b>și societății</b> <b>și societății</b> <b>ȘI SOCIETĂȚII</b>
Pro Language Feature Bulgarian	<b>България</b> <b>Любов</b> <b>Надежда</b> <b>Душа</b>	<b>България</b> <b>Любов</b> <b>Надежда</b> <b>Душа</b>
Pro Language Feature Serbian Macedonian	<b>Србија</b>	<b>Србија</b>

15pt GT Walsheim Ultra Light

One has a fantastic view of the world's most photographed mountain from the Klein-Matterhorn, which is only separated from the

---

20pt GT Walsheim Ultra Light

First the glaciers, then the brooks have shaped the breathtaking rock formation from the 200 mil-

---

30pt GT Walsheim Ultra Light

A spring, the "Fontaine Froide", has its source in the middle of a sink-

---

40pt GT Walsheim Ultra Light

Another natural wonder in the immediate vicini-

---

65pt GT Walsheim Ultra Light

Walensee

---

95pt GT Walsheim Ultra Light

Biemme

---

120pt GT Walsheim Ultra Light

Rhein

---

160pt GT Walsheim Ultra Light

1931

---

130pt GT Walsheim Ultra Light

HISTORICAL

---

140pt GT Walsheim Ultra Light

St. Moritz

---

160pt GT Walsheim Ultra Light

Schnee

---

15pt GT Walsheim Thin

It contains three basic topographical areas: the Swiss Alps to the south, the Swiss Plateau or Central Plateau, and the Jura

---

20pt GT Walsheim Thin

hydrographic network includes several of the largest bodies of freshwater in Central and

---

30pt GT Walsheim Thin

The largest lake is Lake Geneva, in western Switzerland shared

---

40pt GT Walsheim Thin

French Camargue region and the Rhine flows

---

65pt GT Walsheim Thin

Grischun

---

95pt GT Walsheim Thin

Mönch

---

120pt GT Walsheim Thin

Säntis

---

160 GT Walsheim Thin

Leuk

---

130pt GT Walsheim Thin

JUNGFRAU

---

140pt GT Walsheim Thin

Timetable

---

160pt GT Walsheim Thin

Genève

---

15pt GT Walsheim Light

48 of Switzerland's mountains are 4000 metres above sea in altitude or higher. At 4634 m, Monte Rosa is the highest,

---

20pt GT Walsheim Light

The Bernese Alps above the deep glacial Lauterbrunnen valley, containing 72 waterfalls,

---

30pt GT Walsheim Light

The more populous northern part of the country, comprising

---

40pt GT Walsheim Light

The less humid winters in the mountains may

---

65pt GT Walsheim Light

Le Cervin

---

95pt GT Walsheim Light

Lavaux

---

120pt GT Walsheim Light

Flims

---

160pt GT Walsheim Light

SBB

---



130pt GT Walsheim Light

ST. GALLLEN

---

140pt GT Walsheim Light

Briissago

---

160pt GT Walsheim Light

Luggano

---

15pt GT Walsheim Regular

A weather phenomenon known as the föhn (with an identical effect to the chinook wind) can occur at all times of the year and

---

20pt GT Walsheim Regular

Alps during rainfall periods on the southern face of the Alps. This works both ways across

---

30pt GT Walsheim Regular

Large alpine areas such as Graubünden remain drier than

---

40pt GT Walsheim Regular

Valleys running south to north trigger the best

---

65pt GT Walsheim Regular

Clachan

---

95pt GT Walsheim Regular

Vallada

---

120pt GT Walsheim Regular

RENO

---

160pt GT Walsheim Regular

Wil

---

130pt GT Walsheim Regular

Obergoms

---

140pt GT Walsheim Regular

BASILEA

---

160pt GT Walsheim Regular

Transit

---

15pt GT Walsheim Medium

Because the many delicate valleys separated by high mountains often form unique ecologies. The mountainous regions them-

---

20pt GT Walsheim Medium

The climatic, geological and topographical conditions of the alpine region make for a

---

30pt GT Walsheim Medium

Switzerland ranks first among 132 nations in safeguarding the envi-

---

40pt GT Walsheim Medium

Its heavy reliance on renewable sources of

65pt GT Walsheim Medium

**Bodensee**

---

95pt GT Walsheim Medium

**Davos**

---

120pt GT Walsheim Medium

**Train**

---

160pt GT Walsheim Medium

**1291**

130pt GT Walsheim Medium

Winterthur

---

140pt GT Walsheim Medium

Villaggio

---

160pt GT Walsheim Medium

Rivière

---

15pt GT Walsheim Bold

**The Federal Constitution adopted in 1848 is the legal foundation of the modern federal state. It is among the oldest con-**

---

20pt GT Walsheim Bold

**A new Constitution was adopted in 1999, but did not introduce notable changes to**

---

30pt GT Walsheim Bold

**It outlines basic and political rights of individuals and citi-**

---

40pt GT Walsheim Bold

**There are three main governing bodies on**

65pt GT Walsheim Bold

**Montreux**

---

95pt GT Walsheim Bold

**Emmen**

---

120pt GT Walsheim Bold

**Aare**

---

160pt GT Walsheim Bold

**Sihl**

130pt GT Walsheim Bold

Neuchâtel

---

140pt GT Walsheim Bold

HORGEN

---

160pt GT Walsheim Bold

Perron

---

15pt GT Walsheim Black

**In 2013, the languages most spoken at home among permanent residents aged 15 and older were Swiss German,**

---

20pt GT Walsheim Black

**The federal government is obliged to communicate in the official languages,**

---

30pt GT Walsheim Black

**The role played by dialects in each linguistic region varies**

---

40pt GT Walsheim Black

**While in the Italian-speaking regions**

---

65pt GT Walsheim Black

**Rheintal**

---

95pt GT Walsheim Black

**Motor**

---

120pt GT Walsheim Black

**1917**

---

160pt GT Walsheim Black

**CFF**

---



130pt GT Walsheim Black

**Gotthard**

---

140pt GT Walsheim Black

**Bun di!**

---

160pt GT Walsheim Black

**Cargo**

---

15pt GT Walsheim Ultra Bold

**Switzerland has no official state religion, though most of the cantons (except Geneva and Neuchâtel) rec-**

---

20pt GT Walsheim Ultra Bold

**with a complex patchwork of majorities over most of the country. Geneva**

---

30pt GT Walsheim Ultra Bold

**It became known internationally as the Protestant**

---

40pt GT Walsheim Ultra Bold

**One canton, Appenzell, was officially**

65pt GT Walsheim Ultra Bold

**ALPINE**

---

95pt GT Walsheim Ultra Bold

**Citad**

---

120pt GT Walsheim Ultra Bold

**Laax**

---

160pt GT Walsheim Ultra Bold

**Val**

130pt GT Walsheim Ultra Bold

**Jet d'eau**

---

140pt GT Walsheim Ultra Bold

**Piz Fess**

---

160pt GT Walsheim Ultra Bold

**Tessin**

---

15pt GT Walsheim Condensed Ultra Light

The linguistically isolated Romansh culture in Graubünden in eastern Switzerland constitutes an exception, it survives only in the upper valleys of the

---

20pt GT Walsheim Condensed Ultra Light

Some 1000 museums are distributed through the country; the number has more than tripled since 1950.

---

30pt GT Walsheim Condensed Ultra Light

The SNA supplies almost all Swiss media and a couple dozen foreign media services

---

40pt GT Walsheim Condensed Ultra Light

While some dishes such as fondue, raclette or rösti are

---

65pt GT Walsheim Condensed Ultra Light

Lac Léman

---

95pt GT Walsheim Condensed Ultra Light

Railway

---

120pt GT Walsheim Condensed Ultra Light

Pilatus

---

160pt GT Walsheim Condensed Ultra Light

Chur

---

130pt GT Walsheim Condensed Ultra Light

Finsteraarhorn

---

140pt GT Walsheim Condensed Ultra Light

Le Lac Bleu

---

160pt GT Walsheim Condensed Ultra Light

Lake Thun

---

15pt GT Walsheim Condensed Thin

The current shape of the mountain is the result of cirque erosion due to multiple glaciers diverging from the peak, such as the Matterhorn Glacier at

---

20pt GT Walsheim Condensed Thin

Since the end of the 19th century, when railways were built in the area, it has attracted increasing numbers

---

30pt GT Walsheim Condensed Thin

Many trekkers also undertake the 10-day-long circuit around the mountain. The

---

40pt GT Walsheim Condensed Thin

On Münster's topographical chart this group is marked un-

65pt GT Walsheim Condensed Thin

Halwilersee

---

95pt GT Walsheim Condensed Thin

Limmat

---

120pt GT Walsheim Condensed Thin

Glarus

---

160pt GT Walsheim Condensed Thin

Nidau

130pt GT Walsheim Condensed Thin

LENZERRHORN

---

140pt GT Walsheim Condensed Thin

Unterseen

---

160pt GT Walsheim Condensed Thin

Mountain

---

15pt GT Walsheim Condensed Light

Peter Taugwalder and his son of the same name, on 14 July 1865. Douglas, Hudson, Hadow and Croz were killed on the descent when Hadow slipped and

---

20pt GT Walsheim Condensed Light

The name appeared first as Zur Matte (“at the meadow”) and became later Zermatt. It does not appear until 1495

---

30pt GT Walsheim Condensed Light

Many hamlets are located in the valleys above Zermatt, however they are not

---

40pt GT Walsheim Condensed Light

Of this area, about 9,4% is used for agricultural purposes,

---

65pt GT Walsheim Condensed Light

Lej da Segl

---

95pt GT Walsheim Condensed Light

Konstanz

---

120pt GT Walsheim Condensed Light

Traffic

---

160pt GT Walsheim Condensed Light

Casa

---



130pt GT Walsheim Condensed Light

Romainmôtier

---

140pt GT Walsheim Condensed Light

TURISMO

---

160pt GT Walsheim Condensed Light

Zermatt

---

15pt GT Walsheim Condensed Regular

The most commonly heard musical instruments include the “Schwyzerörgeli” (accordion), the violin, bass violin, clarinet and, in certain regions,

---

20pt GT Walsheim Condensed Regular

The alphorn is regarded as a typically Swiss instrument. The warm sounds of this original instrument

---

30pt GT Walsheim Condensed Regular

If you tend to forget the words when you are singing, you should try natural

---

40pt GT Walsheim Condensed Regular

There are a number of local groups devoted to Ländler

---

65pt GT Walsheim Condensed Regular

ZYTGLOGGE

---

95pt GT Walsheim Condensed Regular

Kander

---

120pt GT Walsheim Condensed Regular

Glacier

---

160pt GT Walsheim Condensed Regular

Thun

---

130pt GT Walsheim Condensed Regular

Verkehrshaus

---

140pt GT Walsheim Condensed Regular

COGWHHEEL

---

160pt GT Walsheim Condensed Regular

Interlaken

---

15pt GT Walsheim Condensed Medium

The production of cheese in the summer enabled people to preserve milk and stockpile it for the long winter months. The practice of Alpine farming

---

20pt GT Walsheim Condensed Medium

Chästeilet cheese sharing – traditions that have been carefully maintained to this day. From a dis-

---

30pt GT Walsheim Condensed Medium

Cow bells, a blade of grass in the mouth, unlimited nature, sunsets

---

40pt GT Walsheim Condensed Medium

From the end of May the herdsmen and their cattle

---

65pt GT Walsheim Condensed Medium

Matterhorn

---

95pt GT Walsheim Condensed Medium

Gondola

---

120pt GT Walsheim Condensed Medium

Viafier

---

160pt GT Walsheim Condensed Medium

Linth

---

130pt GT Walsheim Condensed Medium

**Zahnradbahn**

---

140pt GT Walsheim Condensed Medium

**Leukerbad**

---

160pt GT Walsheim Condensed Medium

**ROTHORN**

---

15pt GT Walsheim Condensed Bold

**For a long time, Swiss sports customs were eclipsed by international types of sport – but recently, they have come back into their**

---

20pt GT Walsheim Condensed Bold

**While regional and local sporting traditions have often been neglected, there are some sports**

---

30pt GT Walsheim Condensed Bold

**Major events such as the Swiss Wrestling and Alpine Festival ESAF are**

---

40pt GT Walsheim Condensed Bold

**At these multi-day festive occasions, athletic wrestlers,**

60pt GT Walsheim Condensed Bold

**Andermatt**

---

95pt GT Walsheim Condensed Bold

**Ski lift**

---

120pt GT Walsheim Condensed Bold

**Doubs**

---

160pt GT Walsheim Condensed Bold

**Hike**

130pt GT Walsheim Condensed Bold

**Wildstrubel**

---

140pt GT Walsheim Condensed Bold

**Postal Car**

---

160pt GT Walsheim Condensed Bold

**GSTAAD**

---

15pt GT Walsheim Condensed Black

**In earlier times the Alpine herdsmen and farmers would show off their strength in bouts of wrestling at festivals. Now the sport**

---

20pt GT Walsheim Condensed Black

**The festivals celebrated in Switzerland differ considerably depending on the season and**

---

30pt GT Walsheim Condensed Black

**Many of them reflect the course of the agricultural year, such as**

---

40pt GT Walsheim Condensed Black

**Because there was less for farmers to do in**

---

60pt GT Walsheim Condensed Black

**Münster**

---

95pt GT Walsheim Condensed Black

**RHONE**

---

120pt GT Walsheim Condensed Black

**Arosa**

---

160pt GT Walsheim Condensed Black

**Golf**

---



130pt GT Walsheim Condensed Black

**LAKE BIEL**

---

140pt GT Walsheim Condensed Black

**Montreux**

---

160pt GT Walsheim Condensed Black

**4505 m**

---

15pt GT Walsheim Condensed Ultra Bold

**There are not festivals in every season  
all over Switzerland - but there are  
festivals in every season somewhere**

---

20pt GT Walsheim Condensed Ultra Bold

**The traditions of wintertime  
could not be more diverse,  
with Christmas as a time of**

---

30pt GT Walsheim Condensed Ultra Bold

**Locals and foreign  
visitors also have  
an opportunity here**

---

40pt GT Walsheim Condensed Ultra Bold

**Today, 95% of  
Swiss watches  
are destined for**

60pt GT Walsheim Condensed Ultra Bold

**Saas-Fee**

---

95pt GT Walsheim Condensed Ultra Bold

**Cham**

---

120pt GT Walsheim Condensed Ultra Bold

**Heidi**

---

160pt GT Walsheim Condensed Ultra Bold

**URI**

130pt GT Walsheim Condensed Ultra Bold

**Cableway**

---

140pt GT Walsheim Condensed Ultra Bold

**Grimmsel**

---

160pt GT Walsheim Condensed Ultra Bold

**Swatch**

---

15pt GT Walsheim Ultra Light

Альпы представляют собой сложную систему хребтов и массивов, протянувшуюся выпуклой к северо-западу дугой от Лигу-

---

20pt GT Walsheim Ultra Light

моря до Среднедунайской низменности. Альпы располагаются на территории 8 стран:

---

30pt GT Walsheim Ultra Light

Монако, Италии, Швейцарии, Германии, Австрии, Лихтен-

---

40pt GT Walsheim Ultra Light

Общая длина альпийской дуги составляет

---

65pt GT Walsheim Ultra Light

Цюрихские

---

95pt GT Walsheim Ultra Light

Тессин

---

120pt GT Walsheim Ultra Light

Поезд

---

160pt GT Walsheim Ultra Light

Тунн

---

130pt GT Walsheim Ultra Light

Обвальден

---

140pt GT Walsheim Ultra Light

Востоке

---

160pt GT Walsheim Ultra Light

СТРАНЫ

---

15pt GT Walsheim Thin

Самой высокой вершиной Альп является гора Монблан с высотой 4810 метров над уровнем моря, расположенная на границе

20pt GT Walsheim Thin

Всего в Альпах сосредоточено около 100 вершин-четырёхтысячников. Альпы являются меж-

30pt GT Walsheim Thin

Туризм в Альпах начал активно развиваться в XX веке и по-

40pt GT Walsheim Thin

большой толчок после окончания Второй Ми-

65pt GT Walsheim Thin

Альтдорф

95pt GT Walsheim Thin

Монах

120pt GT Walsheim Thin

Снег

160 GT Walsheim Thin

Дева

130pt GT Walsheim Thin

Платформа

---

140pt GT Walsheim Thin

Локарно

---

160pt GT Walsheim Thin

Женева

---

15pt GT Walsheim Light

Пять стран из восьми (Швейцария, Франция, Италия, Австрия и Германия) были хозяйками Зимних Олимпийских игр, кото-

---

20pt GT Walsheim Light

Несмотря на активное развитие туризма, в альпийском регионе по-прежнему суще-

---

30pt GT Walsheim Light

традиционная культура, включая сельское хозяйство, дере-

---

40pt GT Walsheim Light

Благодаря расположению в центре Запад-

---

65pt GT Walsheim Light

Лозанна

---

95pt GT Walsheim Light

Цюрих

---

120pt GT Walsheim Light

Берн

---

160pt GT Walsheim Light

Веве

---



130pt GT Walsheim Light

Винтертур

---

140pt GT Walsheim Light

Золотурн

---

160pt GT Walsheim Light

ЛУГАНЮ

---

15pt GT Walsheim Regular

Альпы являются одной из наиболее изученных горных систем. Многие понятия названы по имени Альп, в частности, аль-

---

20pt GT Walsheim Regular

период альпийской складчатости, альпийский тип рельефа, альпийские луга, альпи-

---

30pt GT Walsheim Regular

Единогласно принятого мнения по происхождению назва-

---

40pt GT Walsheim Regular

По одной из версий, латинское слово

65pt GT Walsheim Regular

Женева

---

95pt GT Walsheim Regular

Монте

---

120pt GT Walsheim Regular

Виль

---

160pt GT Walsheim Regular

Рейн

130pt GT Walsheim Regular

Вильнёв

---

140pt GT Walsheim Regular

ТРАНЗИТ

---

160pt GT Walsheim Regular

Раклетт

---

15pt GT Walsheim Medium

от Albus (Белый), использовалось ещё в I веке до нашей эры для обозначения гор, покрытых снегом. Другое предположение

---

20pt GT Walsheim Medium

что название произошло от слов Al или Ar, что означало высокогорную местность.

---

30pt GT Walsheim Medium

Слово Alpe в современном французском и итальянском языках

---

40pt GT Walsheim Medium

Слово Alpeis,  
или Alpes,  
использовалось

---

65pt GT Walsheim Medium

Марках

---

95pt GT Walsheim Medium

Только

---

120pt GT Walsheim Medium

АРАУ

---

160pt GT Walsheim Medium

1648

---

130pt GT Walsheim Medium

Невшатель

---

140pt GT Walsheim Medium

Деревня

---

160pt GT Walsheim Medium

БАЗЕЛЬ

---

15pt GT Walsheim Bold

**гор и горных массивов учёными Древней Греции и Древней Византии. В частности, Прокопий Кесарийский, визан-**

---

20pt GT Walsheim Bold

**VI века, называет в своих сочинениях Альпы и Пиренеи одним названием,**

---

30pt GT Walsheim Bold

**В неизменном виде это слово сохранилось в современном**

---

40pt GT Walsheim Bold

**В кельтском языке также присутствова-**

65pt GT Walsheim Bold

**Монтрё**

---

95pt GT Walsheim Bold

**Эммен**

---

120pt GT Walsheim Bold

**Даре**

---

160pt GT Walsheim Bold

**КУР**

130pt GT Walsheim Bold

**Двигатель**

---

140pt GT Walsheim Bold

**Фрибур**

---

160pt GT Walsheim Bold

**Цюрих**

---

15pt GT Walsheim Black

**Далее оно трансформировалось в английское Alps. Предположительно, к кельтам оно попало из Римской**

---

20pt GT Walsheim Black

**Европейские учёные начали проявлять интерес к изучению происхождения**

---

30pt GT Walsheim Black

**Альпы были первой горной цепью, которую начали**

---

40pt GT Walsheim Black

**В середине XIX века для объяснения**

65pt GT Walsheim Black

**Оладыи**

---

95pt GT Walsheim Black

**РЕКА**

---

120pt GT Walsheim Black

**Бильь**

---

160pt GT Walsheim Black

**Ток**



130pt GT Walsheim Black

**СМОТРЕТЬ**

---

140pt GT Walsheim Black

**ПРОБЕГ**

---

160pt GT Walsheim Black

**СЬОН**

---

15pt GT Walsheim Ultra Bold

**В середине XIX века для объяснения наличия «сложения» горных цепей была использована теория**

---

20pt GT Walsheim Ultra Bold

**В середине 60-х годов XX века ей на смену пришла теория тектоники плит,**

---

30pt GT Walsheim Ultra Bold

**Эта теория дала основу текущему пониманию эво-**

---

40pt GT Walsheim Ultra Bold

**региона Процесс формирования гор-**

65pt GT Walsheim Ultra Bold

**Озеро**

---

95pt GT Walsheim Ultra Bold

**Город**

---

120pt GT Walsheim Ultra Bold

**Лакс**

---

160pt GT Walsheim Ultra Bold

**ИЗ**

130pt GT Walsheim Ultra Bold

**ФОНТАН**

---

140pt GT Walsheim Ultra Bold

**ПТИЦЫ**

---

160pt GT Walsheim Ultra Bold

**НЬОН**

---

15pt GT Walsheim Condensed Ultra Light

Анализ старейших горных пород в глубине Альп, в частности, циркония, показывает, что они начали формироваться в конце протерозойского — начале

20pt GT Walsheim Condensed Ultra Light

Также на территории Альп иногда попадаются окаменелости кембрийского периода. В это же время нача-

30pt GT Walsheim Condensed Ultra Light

материков Гондвана и Лавразия. До пермского периода шло преимуще-

40pt GT Walsheim Condensed Ultra Light

горных пород, которые сейчас залегают глубоко

65pt GT Walsheim Condensed Ultra Light

До свидания

95pt GT Walsheim Condensed Ultra Light

Хорошо

120pt GT Walsheim Condensed Ultra Light

Алло!

160pt GT Walsheim Condensed Ultra Light

СЕМЬ

130pt GT Walsheim Condensed Ultra Light

Санкт-Мориц

---

140pt GT Walsheim Condensed Ultra Light

Отсылка

---

160pt GT Walsheim Condensed Ultra Light

Реклама

---

15pt GT Walsheim Condensed Thin

Образование суперконтинента Пангея завершилось в конце каменноугольного периода при столкновении материков Гондванаи

---

20pt GT Walsheim Condensed Thin

Будущие Альпы находились в месте столкновения двух тектонических плит, при этом их восточная

---

30pt GT Walsheim Condensed Thin

часть оказалась под водой, на дне древнего океана Палеотетиса. Ранне-

---

40pt GT Walsheim Condensed Thin

период характеризовался повышенной вулканической

65pt GT Walsheim Condensed Thin

Шоколад

---

95pt GT Walsheim Condensed Thin

Фондю

---

120pt GT Walsheim Condensed Thin

Улица

---

160pt GT Walsheim Condensed Thin

Газон

130pt GT Walsheim Condensed Thin

Покатоость

---

140pt GT Walsheim Condensed Thin

Альпинизм

---

160pt GT Walsheim Condensed Thin

Часовня

---

15pt GT Walsheim Condensed Light

что привело, совместно с влиянием ветров и осадков, к разрушению герцинских складчатостей. К середине триасового периода (около 220 милли-

---

20pt GT Walsheim Condensed Light

континентальный рифтогенез Африки и Европы породил древний океан

---

30pt GT Walsheim Condensed Light

в результате резкого снижения уровня воды в мировом океане, Паратетис

---

40pt GT Walsheim Condensed Light

территории современных Южных Альп, оставив

---

65pt GT Walsheim Condensed Light

Пятница

---

95pt GT Walsheim Condensed Light

Обшлаг

---

120pt GT Walsheim Condensed Light

Кантон

---

160pt GT Walsheim Condensed Light

ТОМ

---



130pt GT Walsheim Condensed Light

Расписание

---

140pt GT Walsheim Condensed Light

Станция

---

160pt GT Walsheim Condensed Light

РАЗМЕР

---

15pt GT Walsheim Condensed Regular

для этой области. В это же время в сторону Европы от Африки начала двигаться Адриатическая плита, которая вызвала образование

---

20pt GT Walsheim Condensed Regular

впадин в Восточных Альпах. В настоящее время плита продолжает двигаться в сторону Европы, в

---

30pt GT Walsheim Condensed Regular

Поперечной долиной между Боденским озером и озером Комо Альпы

---

40pt GT Walsheim Condensed Regular

на более высокие Западные Альпы (высота до 4808 м,

---

65pt GT Walsheim Condensed Regular

Граница

---

95pt GT Walsheim Condensed Regular

Ледник

---

120pt GT Walsheim Condensed Regular

БЕРЕГ

---

160pt GT Walsheim Condensed Regular

Мост

---

130pt GT Walsheim Condensed Regular

МАСШТАБ

---

140pt GT Walsheim Condensed Regular

Величина

---

160pt GT Walsheim Condensed Regular

СЮЖЕТ

---

15pt GT Walsheim Condensed Medium

**Восточные Альпы (высота до 4049 м, гора Бернина) Следует отметить, что во французской традиции вместо единых Западных Альп приня-**

---

20pt GT Walsheim Condensed Medium

**В такой модели границы между тремя частями Альп практически совпадают с государственными:**

---

30pt GT Walsheim Condensed Medium

**оказываются главным образом во Франции, Центральные — в Швейцарии,**

---

40pt GT Walsheim Condensed Medium

**Ниже приводится список основных районов Альп.**

---

65pt GT Walsheim Condensed Medium

**Маттерхорн**

---

95pt GT Walsheim Condensed Medium

**Кантон**

---

120pt GT Walsheim Condensed Medium

**Лыжа**

---

160pt GT Walsheim Condensed Medium

**бег**

---

130pt GT Walsheim Condensed Medium

СТЕРЖЕНЬ

---

140pt GT Walsheim Condensed Medium

Водопад

---

160pt GT Walsheim Condensed Medium

Четверг

---

15pt GT Walsheim Condensed Bold

**Следует иметь в виду, что он носит во  
многом условный характер, так как раз-  
личные источники проводят соответству-**

---

20pt GT Walsheim Condensed Bold

**Поперечной долиной между  
Боденским озером и озером  
Комо Альпы разделяются на**

---

30pt GT Walsheim Condensed Bold

**более низкие и широ-  
кие Восточные Альпы  
(высота до 4049 м, гора**

---

40pt GT Walsheim Condensed Bold

**французской  
традиции вместо  
единых Запад-**

---

60pt GT Walsheim Condensed Bold

**СВИНЬЯ**

---

95pt GT Walsheim Condensed Bold

**Четыре**

---

120pt GT Walsheim Condensed Bold

**Поток**

---

160pt GT Walsheim Condensed Bold

**Вид**

---

130pt GT Walsheim Condensed Bold

**КОСТОЧКА**

---

140pt GT Walsheim Condensed Bold

**Конечно**

---

160pt GT Walsheim Condensed Bold

**Шашка**

---

15pt GT Walsheim Condensed Black

**В такой модели границы между тремя частями Альп практически совпадают с государственными: Западные Альпы ока-**

---

20pt GT Walsheim Condensed Black

**Центральные — в Швейцарии, и Восточные — в Австрии. Ниже приводится список ос-**

---

30pt GT Walsheim Condensed Black

**Следует иметь в виду, что он носит во многом условный ха-**

---

40pt GT Walsheim Condensed Black

**На север и запад от Альп располагаются**

60pt GT Walsheim Condensed Black

**Мюнстер**

---

95pt GT Walsheim Condensed Black

**Ничего**

---

120pt GT Walsheim Condensed Black

**Гольф**

---

160pt GT Walsheim Condensed Black

**ТРИ**



130pt GT Walsheim Condensed Black

**Собака**

---

140pt GT Walsheim Condensed Black

**Кантон**

---

160pt GT Walsheim Condensed Black

**4505 M**

---

15pt GT Walsheim Pro Condensed Ultra Bold

**Климат различных альпийских регионов зависит от высоты, положения и направления ветра. Летом в Аль-**

---

20pt GT Walsheim Condensed Ultra Bold

**Утром в горах обычно солнечно, после обеда набегают облака. Зима приносит**

---

30pt GT Walsheim Condensed Ultra Bold

**Климат на северной стороне Альп более холодный и влаж-**

---

40pt GT Walsheim Condensed Ultra Bold

**Средняя температура июля — ниже +14 °C,**

60pt GT Walsheim Condensed Ultra Bold

**Альпы**

---

95pt GT Walsheim Condensed Ultra Bold

**Озеро**

---

120pt GT Walsheim Condensed Ultra Bold

**Сыр**

---

160pt GT Walsheim Condensed Ultra Bold

**Нет**

130pt GT Walsheim Condensed Ultra Bold

**Зоопарк**

---

140pt GT Walsheim Condensed Ultra Bold

**КОРОВА**

---

160pt GT Walsheim Condensed Ultra Bold

**Пока!**

---

## Grilli Type

## Upper case latin

À	Á	Ă	Â	Ä	Æ	É	È	Ā	Ą	Å	Ã	B	C	Ć
A	Aacute	Abreve	Acircumflex	Adieresis	AE	AEacute	Agrave	Amacron	Aogonek	Aring	Atilde	B	C	Cacute
Č	Ç	Ĉ	Ċ	D	Đ	E	É	Ě	Ě	Ê	Ë	È	È	Ē
Ccaron	Ccedilla	Ccircumflex	Cdot	D	Dcroat/Eth	E	Eacute	Ebreve	Ecaron	Ecircumflex	Edieresis	Edot	Egrave	Emacron
Ę	F	G	Ğ	Ĝ	Ğ	Ġ	H	Ĥ	Ĥ	I	Í	Ĭ	Î	İ
Eogonek	F	G	Gbreve	Gcircumflex	Gcomma	Gdot	H	Hbar	Hcircumflex	I	Iacute	Ibreve	Icircumflex	Idieresis
İ	Ì	Ī	Ĵ	Ĩ	J	Ĵ	K	Ɔ	L	Ł	Ł	Ł	Ł	Ł
Iacute	Igrave	Iacute	Iogonek	Itilde	J	Jcircumflex	K	Kcomma	L	Lacute	Lcaron	Lcomma	Ldot	Lslash
M	N	Ñ	Ñ	Ń	Ñ	Ń	O	Ó	Ŏ	Ô	Ö	Œ	Ò	Ő
M	N	Nacute	Ncaron	Ncomma	Ntilde	Eng	O	Oacute	Obreve	Ocircumflex	Odieresis	OE	Ograve	Ohungar
Ō	Ø	Ø	Ŏ	P	Q	R	Ŕ	Ŗ	Ŗ	S	Ś	Š	Ş	Ŝ
Omacron	Oslash	Oslashacute	Obreve	P	Q	R	Racute	Rcaron	Rcomma	S	Sacute	Scaron	Scedilla	Scaron
Ş	T	Ț	Ť	Ț	Ț	U	Ú	Ů	Û	Ü	Ù	Ű	Ū	Ŭ
Scomma	T	Tbar	Tcaron	Tcedilla	Tcomma	U	Uacute	Ubreve	Ucircumflex	Udieresis	Ugrave	Uhungar	Umacron	Uogonek
Ū	Ů	V	Ū	Ů	V	W	Ŵ	Ŷ	Ŷ	Ẁ	X	Y	Ý	ÿ
Uring	Utilde	V	Uring	Utilde	V	W	Wacute	Wcircumflex	Wdieresis	Wgrave	X	Y	Yacute	Ycircumflex
Z	Ž	Ž	Ž	ƀ										
Z	Zacute	Zcaron	Zdot	Thorn										

## Lower case latin

á	á	ă	â	ä	æ	æ	à	ā	ą	å	ã	b	c	ć
a	aacute	abreve	acircumflex	adieresis	ae	aacute	agrave	amacron	aogonek	aring	atilde	b	c	cacute
č	ç	ĉ	ċ	d	d'	đ	e	é	ě	ě	ê	ë	è	è
ccaron	ccdeilla	ccircumflex	cdotaccent	d	dcaron	dcroat	e	eacute	ebreve	ecaron	ecircumflex	edieresis	edotaccent	egrave
ē	ę	f	g	ǧ	ĝ	ǧ	ǧ	h	ħ	ĥ	i	í	ï	î
emacron	eogonek	f	g	gbreve	gcircumflex	gcomma	gdotaccent	h	hbar	hcircumflex	i	iacute	ibreve	icircumflex
ï	ı	ì	ij	ī	ı̇	ĩ	j	ĵ	ĵ	k	ķ	ƙ	l	ĺ
idieresis	dotlessi	igrave	ij	imacron	iogonek	itilde	j	jcircumflex	dotlessj	k	kcommaac	kgreenland	l	lacute
l'	ł	ḷ	ł	m	n	ń	ň	ñ	ŋ	ñ	ŋ	o	ó	õ
lcaron	lcomma	ldot	lslash	m	n	nacute	napostrophe	ncaron	ncomma	ntilde	eng	o	oacute	obreve
ô	ö	œ	ò	ó	ō	ø	ø	õ	p	q	r	ř	ř	ŕ
ocircumflex	odieresis	oe	ograve	ohungar	omacron	oslash	oslashacute	otilde	p	q	r	racute	rcaron	racorná-
s	ś	š	ş	ș	ș	t	ţ	ţ	ţ	ţ	u	ú	ů	û
s	sacute	scaron	scedilla	scircumflex	scomma	t	tbar	tcaron	tcedilla	tcomma	u	uacute	ubreve	ucircumflex
ü	ù	ú	ū	ų	ů	ũ	v	w	ŵ	ŵ	ÿ	ÿ	x	y
udieresis	ugrave	uhungar	umacron	uoogonek	uring	utilde	v	w	wacute	wcircumflex	wdieresis	wgrave	x	y
ý	ÿ	ÿ	ÿ	z	ž	ž	ž	ª	º	þ				
yacute	ycircumflex	ydieresis	yacute	z	zacute	zcaron	zdot	ordmasc	ordfem	thorn				

Other

ß	&	,	;	:	.	...	-	!	¡	?	¿	‘	’	“
germandbls	germandbls	comma	semicolon	colon	period	elipsis	hyphen	exclam	exclamdown	question	questiondown	quoteleft	quoteright	quotedblleft
”	,	„	<	>	/		—	—	•	(	)	[	]	*
quotedblr	quotesinglb	quotedblb	guilsinglleft	guilsinglright	slash	bar	endash	emdash	bullet	parenleft	parenright	bracketleft	bracketright	asterisk
†	~		\	_	'	"	@	©	®	™	\$	¢	£	f
dagger	asciitilde	brokenbar	backslash	undersocre	quotesingle	quotedbl	at	copyright	registered	trademark	dollar	cent	sterling	florin
¥	€	₩	₴	₮	₮	₮	₮	₮	₮	₮	₮	/	¼	½
yen	euro	won	hryvnia	tenge	tugrik	currency	Baht	liraTurkish	ruble	rupeeIndian	Bitcoin	fraction	onequarter	onehalf
¾	%	‰	∅	0	1	2	3	4	5	6	7	8	9	fi
threequart	percent	perthousand	zeroslash	zero	one	two	three	four	five	six	seven	eight	nine	fi
fl	μ	'	ð	#	No	Δ	Ω	π	•	{	}	«	»	+
fl	mu	apostroph	eth	numersign	numero	Delta	Omega	pi	periodcenter	braceleft	braceright	guillemetleft	guillemetrig	plus
-	±	×	÷	=	<	>	°	≈	≥	∞	≤	¬	≠	∫
minus	plusminus	multiply	divide	equal	less	greater	degree	approxequal	greaterequal	infinity	lessequal	logicalnot	notequal	integral
∂	∏	√	∑	◊	¶	§	^	‡	↑	↗	→	↘	↓	↙
partialdiff	product	radical	summation	lozenge	paragraph	section	asciicircum	daggerdbl	upArrow	northEastA	rightArrow	southEastA	downArrow	southWestA
←	↖	ℓ	e											
leftArrow	northWestA	literSign	estimated											

Upper case cyrillic (Pro version only)

А	Б	В	Г	Ґ	Г	Д	Е	Ё	Ж	З	И	Й	Ў	К
A-cy	Be-cy	Ve-cy	Ge-cy	Gje-cy	Gheupturn	De-cy	Ie-cy	Io-cy	Zhe-cy	Ze-cy	Ii-cy	Ishort-cy	Ishorttail	Ka-cy
Ѐ	Л	М	Н	О	П	Р	С	Т	У	Ў	Ф	Х	Ч	Ц
Kje-cy	El-cy	Em-cy	En-cy	O-cy	Pe-cy	Er-cy	Es-cy	Te-cy	U-cy	Ushort-cy	Ef-cy	Ha-cy	Che-cy	Tse-cy
Ш	Щ	Ц	Ь	Ъ	Ы	Ль	Нь	Ѕ	Є	Э	І	Ї	Ј	Ћ
Sha-cy	Shcha-cy	Dzhe-cy	Softsign-cy	Hardsign-cy	Yeru-cy	Lje-cy	Nje-cy	Dze-cy	E-cy	Ereversed-cy	I-cy	Yi-cy	Je-cy	Tshe-cy
Ю	Я	Ѧ	ѧ	Ө	Ѱ	ѱ	Ѳ	ѳ	Ѵ	ѵ	Ѷ	ѷ	Ѹ	ѹ
Iu-cy	Ia-cy	Dje-cy	Yat-cy	Fita-cy	Izhitsa-cy	Ghestroke	Ghemiddle	Zhedescend	Zedescende	Kadescend	Kavertical	Kastroke-cy	Kabashkir-cy	Endescend
Ҁ	҂	҄	҆	҈	Ҋ	ҋ	ҍ	ҏ	ґ	ғ	ҕ	җ	ҙ	қ
Enghe-cy	Pemiddle	Pedescend	Haabkhas	Esdescend	Tedescende	Ustrait-cy	Ustraitstro	Hadescend	Tetse-cy	Chedescen	Chevertical	Shha-cy	Shhadesc	Cheabkhasi
ё	і	Ѡ	ѡ	Ѣ	ѣ	Ѥ	ѥ	Ѧ	ѧ	Ѩ	ѩ	Ѫ	ѫ	Ѭ
Chedescen	Palochka-cy	Zhebreve-cy	Kahook-cy	Eltail-cy	Enhook-cy	Entail-cy	Cekhakas	Emtail-cy	Abreve-cy	Adieresis-cy	Aie-cy	lebreve-cy	Schwa-cy	Schwadiere
Ѱ	ѱ	Ѳ	ѳ	Ѵ	ѵ	Ѷ	ѷ	Ѹ	ѹ	Ѻ	ѻ	Ѽ	ѽ	Ѿ
Zhedieresi	Zedieresi	Dzeabkhas	Imacron-cy	Idieresis-cy	Odieresis-cy	Obarred-cy	Obarreddier	Edieresis-cy	Umacron-cy	Udieresis-cy	Uhungar	Chedieresi	Gedescend	Yerudieresi
Ҁ	҂	҄	҆	҈	Ҋ	ҋ	ҍ	ҏ	ґ	ғ	ҕ	җ	ҙ	қ
Hahook-cy	Reversedz	Elhook-cy	We-cy	Semisoftsi	Ertick-cy									

Lower case cyrillic (Pro version only)

а	б	в	г	ѓ	ґ	д	е	ё	ж	з	и	й	ѝ	к
a-cy	be-cy	ve-cy	ge-cy	gje-cy	gheupturn	de-cy	ie-cy	io-cy	zhe-cy	ze-cy	ii-cy	iishort-cy	iishorttail	ka-cy
ќ	л	м	н	о	п	р	с	т	у	ў	ф	х	ч	ц
kje-cy	el-cy	em-cy	en-cy	o-cy	pe-cy	er-cy	es-cy	te-cy	u-cy	ushort-cy	ef-cy	ha-cy	che-cy	tse-cy
ш	щ	џ	ь	ъ	ы	љ	њ	ѕ	е	э	і	ї	ј	ћ
sha-cy	shcha-cy	dzhe-cy	softsign-cy	hardsign-cy	yeru-cy	lje-cy	nje-cy	dze-cy	e-cy	ereversed	i-cy	yi-cy	je-cy	tshe-cy
ю	я	ђ	ѣ	ѐ	ѵ	ѳ	ђ	ж	з	ќ	к	к	к	ң
iu-cy	ia-cy	dje-cy	yat-cy	fita-cy	izhitsa-cy	ghestroke	ghemiddle	zhedescend	zedescend	kadescend	kavertical	kastroke-cy	kabashkir-cy	endescend
н	њ	п	Ѡ	ѡ	т	ү	ұ	ҳ	ц	ч	ч	h	һ	е
enghe-cy	pemiddle	pedescend	haabkhasia	esdescend	tedescend	ustrait-cy	ustraitstrok	hadescend	tetse-cy	chedescend	chevertical	shha-cy	shhadescend	cheabkhasi
ѣ	і	ђ	ѣ	л	н	ң	ч	м	ђ	ä	æ	ё	ə	ë
chedescend	palochka-cy	zhebreve-cy	kahook-cy	eltail-cy	enhook-cy	entail-cy	chekhakass	emtail-cy	abreve-cy	adieresis-cy	aie-cy	iebreve-cy	schwa-cy	schwadieses
ђ	з	з	й	й	ö	ө	ё	э	ū	ü	ý	č	ґ	й
zhedieresis	zedieresis	dzeabkhas	imacron-cy	idieresis-cy	odieresis-cy	obarred-cy	obarreddier	edieresis-cy	umacron-cy	udieresis-cy	uhungaruml	chedieresi	gedescend	yerudieresis
х	ε	л	w	ѣ	р									
hahook-cy	versedze-cy	elhook-cy	we-cy	semisoftsi	ertick-cy									



## Alternates latin

Ǻ	Ě	Ǫ	Ǫ̈	Ÿ	Ý	ÿ	a	á	ǻ	â	ä	à	ā	ą
Adieresis	Edieresis	Odieresis	Udieresis	Y	Yacute	Ycircumflex	a	aacute	abreve	acircumflex	adieresis	agrave	amacron	aogonek
ǻ	ã	y	ý	ÿ	ÿ	ÿ								
aring	atilde		yacute	ycircumflex	ydieresis	yacute								

## Alternates cyrillic (Pro version only)

Д	Л	В	г	г	ж	з	и	й	к	л	н	м	п	ш
De-cy.locl	El-cy.locl	ve-cy.locl	ge-cy.locl	de-cy.locl	zhe-cy.locl	ze-cy.locl	ii-cy.locl	iishort-cy	ka-cy.locl	el-cy.locl	pe-cy.locl	te-cy.locl	tse-cy.locl	sha-cy.locl
щ	ю	ѡ	а	ā	ÿ	ý								
shcha-cy	iu-cy.locl	be-cy.locl	a-cy	umacron-cy	udieresis-cy	uhungaruml								

Technical Specifications

Release	March 2017	File Formats	Desktop: OTF Web: WOFF, TTF, EOT, SVG App: OTF
GT Walsheim Supported Languages	Albanian, Danish, Dutch, English, Faroese, Finnish, Flemish, German, Icelandic, Indonesian, Irish, Italian, Malay, Norwegian, Portuguese, Scottish Gaelic, Spanish, Swahili, Swedish, Tagalog, Afrikaans, Basque, Breton, Bosnian, Catalan, Croatian, Czech, Esperanto, Estonian, Fijian, French, Frisian, Greenlandic, Hawaiian, Hungarian, Latin, Latvian, Lithuanian, Maltese, Maori, Polish, Provençal, Rhaeto-Romanic, Romanian, Moldavian, Romany, Sámi (Inari), Sámi (Luli), Sámi (Northern), Sámi (Southern), Samoan, Slovak, Slovenian, Sorbian, Turkish, Welsh	Licensing	Free Trial Fonts License Trial fonts allow you to play with our fonts at no cost. You can use them to create mockups before getting client approval. Students can use them for non-commercial university projects, too.  Desktop License This license is used for creating printed documents, logos, website graphics, and so on. Desktop fonts are licensed for a certain number of computers in your organization.  Webfont License This license is what you purchase to use our typefaces on websites with the @font-face technology. You may use them for website mockups. Webfonts are licensed for a certain number of website visitors per month.  Mobile App License This is the license to embed our fonts in your mobile application. Mobile app fonts are licensed for a certain number of developers and valid for Android and iOS.  Further licenses on request
GT Walsheim ISO Codelist	ISO 8859- 1 Latin 1 (Western) ISO 8859- 2 Latin 2 (Central Europe) ISO 8859- 3 Latin 3 (Tu, Malt, Gal, Esp) ISO 8859- 5 Latin 4 (Baltic) ISO 8859- 9 Latin 5 (Turkish) ISO 8859- 10 Latin 6 (Scandinavian) ISO 8859- 13 Latin 7 (Baltic 2) ISO 8859- 15 Latin 9 ISO 8859- 16 Latin 10	About GrilliType	Grilli Type is an independent Swiss type foundry. We offer original retail and custom typefaces, high quality products with a contemporary aesthetic in the Swiss tradition. This tradition is reflected in the visual but also the technical standard of our fonts and our service. Together with our designers we create useful, high quality typefaces that stand the test of time.
GT Walsheim Pro Additional Supported Languages	Abazin, Abkhazian, Adyge, Aghul, Altaic, Avar, Azeri , Bashkir, Belorussian, Bulgarian, Buryat, Chechen, Chukchi, Chuvash, Dargwa, Dolgan, Dungan, Enets, Even, Evenki, Eskimo (Yupik), Ingush, Kabardino-Cirkassian, Kalmyk, Karakalpak, Kirghiz, Komi-Zyrian, Komi-Permyak, Koryak, Kryashen Tatar, Kumyk, Kurdish, Khakass, Lak, Lezgin, Macedonian, Mari-High, Moldavian, Mongolian, Mordvin-Moksha, Mordvin-Erzya, Nanai, Negidal'skij, Ossetic, Russian Old, Rutul, Serbian, Shor, Tabasaran, Tadzhiik, Talysh, Tatar Volgaic, Tofalar, Touva (Soyot), Turkmen, Tsakhur, Udmurt, Uzbek, Uighur, Ukrainian, Ulch	Contact	mail@grillitype.com www.grillitype.com
GT Walsheim Pro Additional ISO Codelist	ISO 8859- 5 Cyrillic OpenType LatCyr Asia		