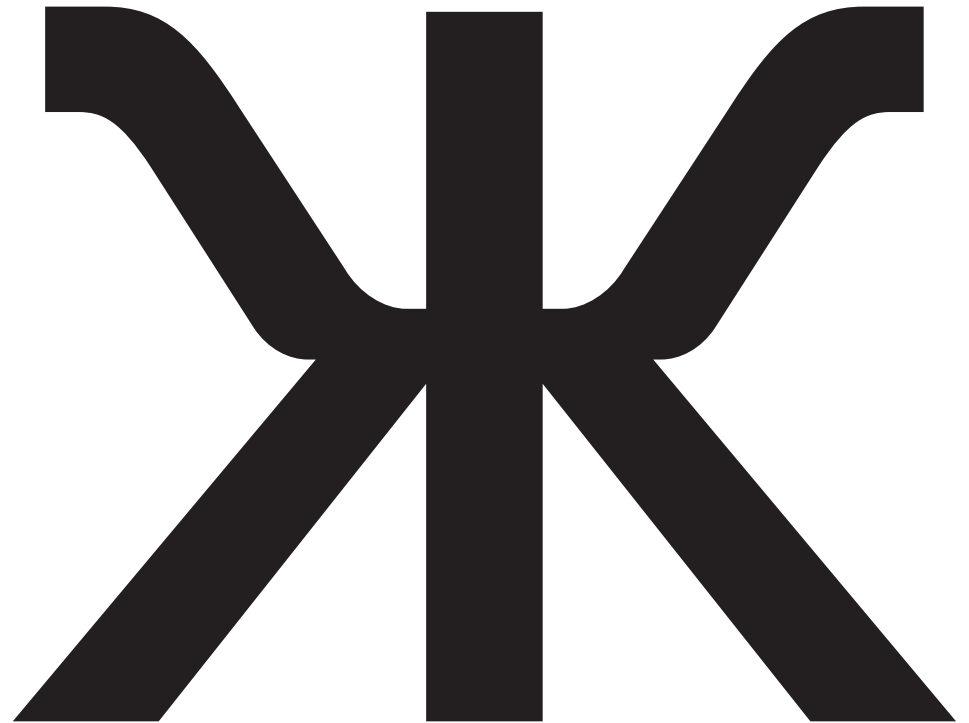


GT WALSHEIM

A large, bold, black uppercase letter 'G' from the GT Walsheim typeface. The letter features a thick, rounded top curve and a straight vertical stem that ends in a horizontal bar with a slightly rounded right edge.A large, bold, black uppercase letter 'K' from the GT Walsheim typeface. The letter has a thick, rounded top curve on the left side, a vertical stem, and two diagonal legs that meet at the stem. The bottom of the legs is slightly rounded.

About

Inspired by the lettering of Swiss poster designer legend Otto Baumberger from the 1930s, GT Walsheim is a friendly but precise typeface. Unlike other geometric sans-serifs, it sports warm curves and wears a broad smile.

Designed by
Noël Leu (Grilli Type)

Details
Released 2011 / 2014 / 2017
Available in 32 Styles
For Desktop, Web, App Licensing

Grilli Type

Walsheim	Standard	Oblique	Standard	Oblique
Ultra Light	Aa	<i>Aa</i>	Яя	<i>Яя</i>
Thin	Bb	<i>Bb</i>	Бб	<i>Бб</i>
Light	Cc	<i>Cc</i>	Зз	<i>Зз</i>
Regular	Dd	<i>Dd</i>	Дд	<i>Дд</i>
Medium	Ee	<i>Ee</i>	Лл	<i>Лл</i>
Bold	Ff	<i>Ff</i>	Фф	<i>Фф</i>
Black	Gg	<i>Gg</i>	Кк	<i>Кк</i>
Ultra Bold	Hh	<i>Hh</i>	Чч	<i>Чч</i>

Walsheim	Condensed	Cond Oblique	Condensed	Cond Oblique
Ultra Light	Aa	<i>Aa</i>	Яя	<i>Яя</i>
Thin	Bb	<i>Bb</i>	Бб	<i>Бб</i>
Light	Cc	<i>Cc</i>	Зз	<i>Зз</i>
Regular	Dd	<i>Dd</i>	Дд	<i>Дд</i>
Medium	Ee	<i>Ee</i>	Лл	<i>Лл</i>
Bold	Ff	<i>Ff</i>	Фф	<i>Фф</i>
Black	Gg	<i>Gg</i>	Кк	<i>Кк</i>
Ultra Bold	Hh	<i>Hh</i>	Чч	<i>Чч</i>

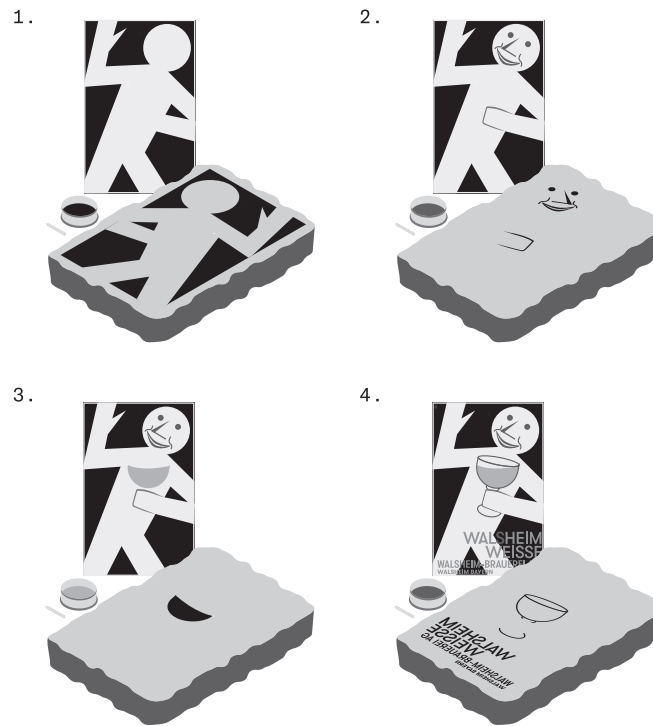
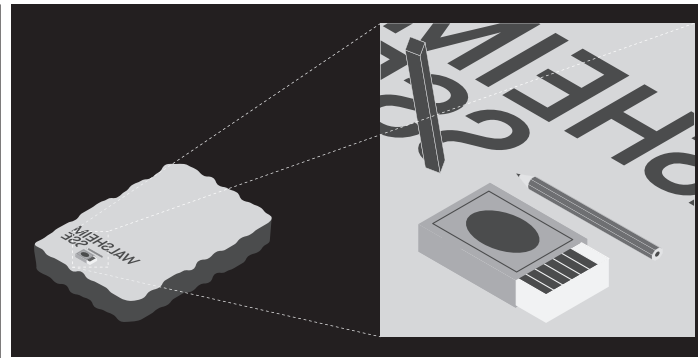
Background

GT Walsheim is based on the hand-painted poster lettering of Swiss poster artist legend Otto Baumberger. He designed posters for politics, commerce, and culture. As a pioneer of what later became the Swiss Style, he created simple, visually striking motives that showed the subject matter at hand.

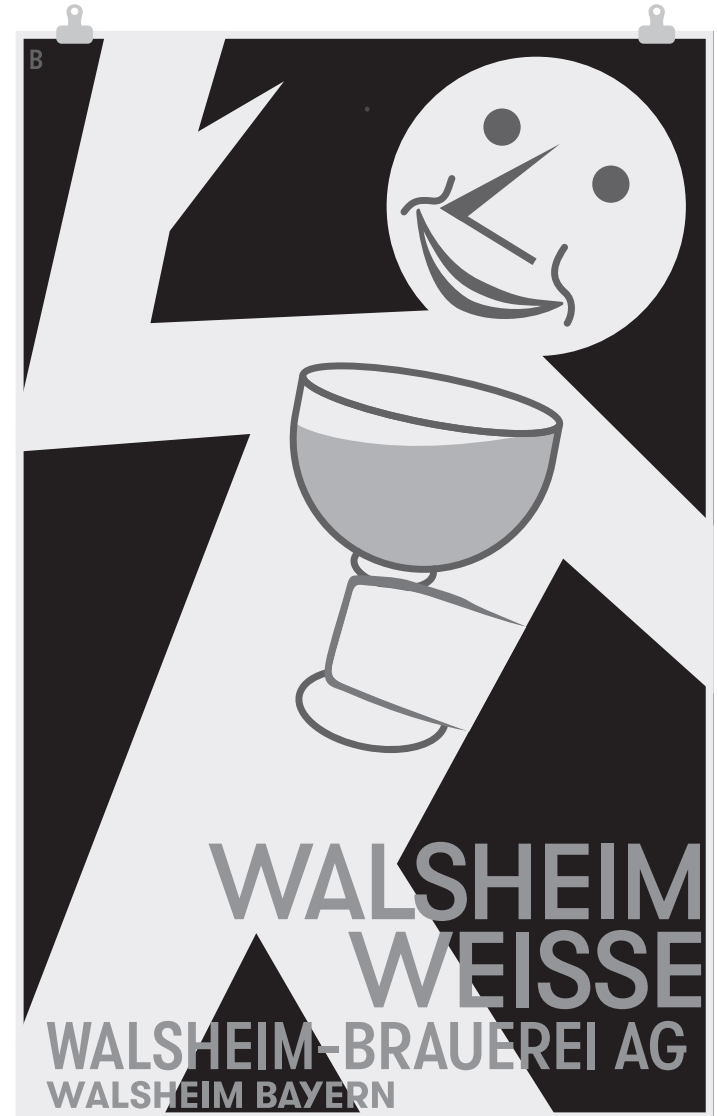


Development

Otto Baumberger created his posters by hand, drawing each color separately with chalk on a lithography stone. Those layers were then printed on top of each other, creating for the time extremely colorful, striking posters.



Result



Grilli Type

Family

Uppercase

Lowercase

450pt

Ultra Bold
Bold
Ultra Light

The height of the lowercase (x-height) grows with the overall boldness of each style. This creates enough room for even very bold weights.



Grilli Type

Family

Ultra Light

Bold

Ultra Bold

80pt

The difference between thick and thin strokes becomes more extreme for bolder styles.



200pt

The x-height grows with the weights to create enough room for the very bold letters and create a balanced look with the capital letters.



8pt / 10pt

All styles are balanced and have a even texture.

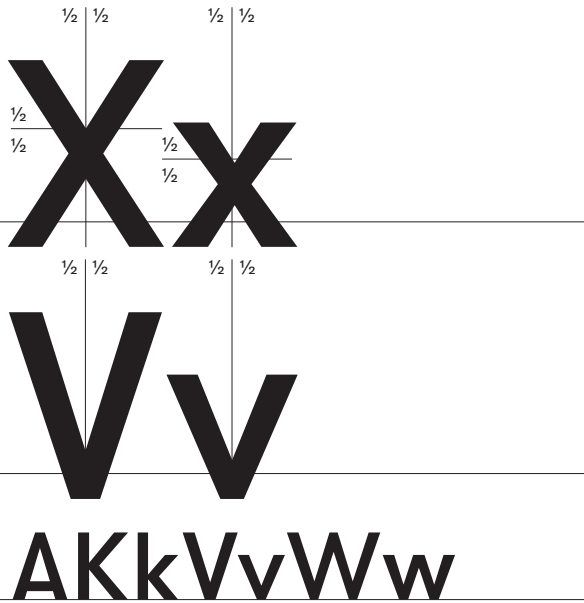
Rate odi nulparc hillecto tem verum, ea nit litaerunto il is elessimusam volores dolorib usanita speribus, cum estionsequi odi auditat empersp ernatur, vellit es nat. Min et ommodis que sin et vendis alicit, am, ommoloritae labo. Ut quia dolo bea quam, totaturibus unto velluptat. Gent. Sunt, officia nobissi musapietum, sundunt. Ceaquist eatiniendit voluptatque Ceaquist eatiniendit voluptatque nobissi musapietum, sundunt. Ceaquist eatiniendit voluptatque Ceaquist eatiniendit voluptatque Delicias debis aut doluptate lautem ne voluptas quiatur, sunti consequamet pellanda doloris aliam quam

Rate odi nulparc hillecto tem verum, ea nit litaerunto il is elessimusam volores dolorib usanita speribus, cum estionsequi odi auditat empersp ernatur, vellit es nat. Min et ommodis que sin et vendis alicit, am, ommoloritae labo. Ut quia dolo bea quam, totaturibus unto velluptat. Gent. Sunt, officia nobissi musapietum, sundunt. Ceaquist eatiniendit voluptatque Ceaquist eatiniendit voluptatque nobissi musapietum, sundunt. Ceaquist eatiniendit voluptatque Ceaquist eatiniendit voluptatque Tem renisitate plis que necto

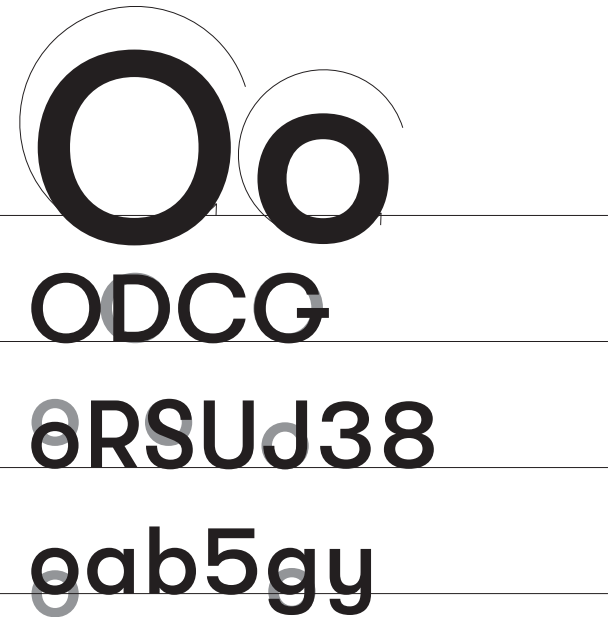
Rate odi nulparc hillecto tem verum, ea nit litaerunto il is elessimusam volores dolorib usanita speribus, cum estionsequi odi auditat empersp ernatur, vellit es nat. Min et ommodis que sin et vendis alicit, am, ommoloritae labo. Ut quia dolo bea quam, totaturibus unto velluptat. Gent. Sunt, officia nobissi musapietum, sundunt. Ceaquist eatiniendit voluptatque nobissi musapietum, sundunt. Ceaquist eatiniendit voluptatque Ceaquist eatiniendit voluptatque Ceaquist

Anatomy

Symmetrical design principle



Circular Forms



Big dots



Stylistic Alternates OFF

Stylistic Set SS01

Yearly

Stylistic Set SS02

Youth

Stylistic Set SS03

Eager

Stylistic Set SS04

Stylish

Stylistic Alternates ON

Stylistic Set SS01

Yearly

Stylistic Set SS02

Youth

Stylistic Set SS03

Eager

Stylistic Set SS04

Stylish

Language Feature OFF

Language Feature ON

Bulgarian

Любов

Любов

Bulgarian

Душа

Душа

Bulgarian

Флаг

Флаг

Serbian and Macedonian

Србија

Србија

Д → Д Л → Л в → в г → г д → д

ж → ж з → з и → и й → й

к → к л → л т → т п → п

ц → ц ш → ш щ → щ ю → ю

Grilli Type

OpenType Features

Tabular Lining Numbers	4.2.2013 1.1.2014	4.2.2013 1.1.2014
------------------------	------------------------------------	------------------------------------

Slashed zero	0	0
--------------	----------	----------

Automatic fractions	3/4 x 13/77	¾ x 13/77
---------------------	--------------------	------------------

Superscript	Note¹	Note¹
Subscript	H₂O	H₂O
Superior	13^(2x+8y)	13^(2x+8y)

Capital spacing	CAPITAL	CAPITAL
-----------------	----------------	----------------

Case sensitive forms	¿QUE? (SECTRA) 23+4=27	¿QUE? (SECTRA) 23+4=27
----------------------	---	---

Alternates

Stylistic set SS01 Y, a, y	Yearly	Yearly
-------------------------------	---------------	---------------

Stylistic set SS02 Y	Youth	Youth
-------------------------	--------------	--------------

Stylistic set SS03 a	Walsheim	Walsheim
-------------------------	-----------------	-----------------

Stylistic set SS04 y	Style	Style
-------------------------	--------------	--------------

Stylistic set SS05 Ä, Ê, Ö, Ü	Ägeri Österreich Üetliberg Ëndë	Ägeri Österreich Üetliberg Ëndë
----------------------------------	--	--

Language Feature Romanian Moldavian	și societății și societății ȘI SOCIETĂȚII	și societății și societății ȘI SOCIETĂȚII
---	--	--

Language Feature Bulgarian	България Любов Надежда Душа	България Любов Надежда Душа
-------------------------------	--	--

Language Feature Serbian Macedonian	Србија	Србија
---	---------------	---------------

Language Feature Ukrainian	Роніі іі	Роніі іі
-------------------------------	-----------------	-----------------

Uppercase Latin

A	B	C	D	E	F	G	H	I	J	K	L	M	N	O
A	B	C	D	E	F	G	H	I	J	K	L	M	N	O
P	Q	R	S	T	U	V	W	X	Y	Z	Á	Ă	Â	Ä
P	Q	R	S	T	U	V	W	X	Y	Z	Aacute	Abreve	Acircumflex	Adieresis
Æ	É	À	Ā	Ą	Å	Ã	Ć	Č	Ç	Ĉ	Ċ	Ǿ	Đ	É
AE	AEacute	Agrave	Amacron	Aogonek	Aring	Atilde	Cacute	Ccaron	Ccedilla	Ccircumflex	Cdotaccent	Dcaron	Dcroat	Eacute
Ě	Ě	Ê	Ë	È	È	Ē	Ę	Ğ	Ĝ	Ġ	Ġ	Ĥ	Ĥ	Í
Ebreve	Ecaron	Ecircumflex	Edieresis	Edotaccent	Egrave	Emacron	Eogonek	Gbreve	Gcircumflex	Gcommaac	Gdotaccent	Hbar	Hcircumflex	Iacute
İ	Î	Ï	İ	Ì	IJ	Ī	Ĵ	Ĩ	Ĵ	Ɔ	Í	Ĺ	Ł	Ł
Ibreve	Icircumflex	Idieresis	Idotaccent	Igrave	IJ	Imacron	Iogonek	Itilde	Jcircumflex	Kcommaac	Lacute	Lcaron	Lcommaac	Ldot
Ł	Ń	Ń	Ń	Ñ	Ń	Ó	Ŏ	Ô	Ö	Œ	Ò	Ő	Ō	Ø
Lslash	Nacute	Ncaron	Ncommaac	Ntilde	Eng	Oacute	Obreve	Ocircumflex	Odieresis	OE	Ograve	Ohungarum	Omacron	Oslash
Ø	Õ	Ŕ	Ř	Ŗ	Ś	Š	Ş	Ŝ	Ş	Ʀ	Ť	Ț	Ț	Ƨ
Oslashacute	Otilde	Racute	Rcaron	Rcommaac	Sacute	Scaron	Scedilla	Scircumflex	Scommaac	Tbar	Tcaron	Tcedilla	Tcommaac	Thorn
Ú	Ŭ	Û	Ü	Ù	Ű	Ū	Ų	Ū	Ū	Ŵ	Ŷ	Ŵ	Ŵ	Ý
Uacute	Ubreve	Ucircumflex	Udieresis	Ugrave	Uhungarum	Umacron	Uogonek	Uring	Utilde	Wacute	Wcircumfle	Wdieresis	Wgrave	Yacute
Û	Û	Û	Ž	Ž	Ž	ß	Đ							
Ycircumflex	Ydieresis	Ygrave	Zacute	Zcaron	Zdotaccent	Germandbls	Eth							

Lowercase Latin

a	b	c	d	e	f	g	h	i	j	k	l	m	n	o
a	b	c	d	e	f	g	h	i	j	k	l	m	n	o
p	q	r	s	t	u	v	w	x	y	z	á	ă	â	ä
p	q	r	s	t	u	v	w	x	y	z	aacute	abreve	acircumflex	adieresis
æ	ǽ	à	ā	ą	å	ã	ć	č	ç	ĉ	ċ	d'	đ	é
ae	aeacute	agrave	amacron	aogonek	aring	atilde	cacute	ccaron	ccedilla	ccircumflex	cdotaccent	dcaron	dcroat	eacute
ě	ě́	ê	ë	è	è̀	ē	ę	ǧ	ĝ	ǧ́	ǧ̀	ħ	ĥ	í
ebreve	ecaron	ecircumflex	edieresis	edotaccent	egrave	emacron	eogonek	gbreve	gcircumflex	gcommaac	gdotaccent	hbar	hcircumflex	iacute
ĭ	î	ï	ı	ı̀	ij	ī	ı̇	ĩ	ĵ	ĵ	ķ	ķ	ı́	ı̀
ibreve	icircumflex	idieresis	idotaccent	idotless	igrave	ij	imacron	iogonek	itilde	jcircumflex	jdotless	kcommaac	kgreenland	lacute
ı́	ı̇	ı̈	ı̋	ń	ń́	ň	ň́	ň̀	ŋ	ó	ö	ô	ö	œ
lcaron	lcommaac	ldot	lslash	nacute	napostrophe	ncaron	ncommaac	ntilde	eng	oacute	obreve	ocircumflex	odieresis	oe
ò	ó	ō	ø	ǿ	õ	í	ř	ř́	ř̀	ś	š	ş	ș	ţ
ograve	ohungarum	omacron	oslash	oslashacute	otilde	racute	rcaron	rcommaac	sacute	scaron	scedilla	scircumflex	scommaac	tbar
ţ	ţ̇	ţ̈	þ	ú	ů	û	ü	ù	ú	ū	ų	ů	ũ	w
tcaron	tcedilla	tcommaac	thorn	uacute	ubreve	ucircumflex	udieresis	ugrave	uhungarum	umacron	uogonek	uring	utilde	wacute
ŵ	ẅ	ẁ	ý	ÿ	ÿ̀	ź	ż	ż́	ż̀	ß	ð			
wcircumflex	wdieresis	wgrave	yacute	ycircumflex	ydieresis	ygrave	zacute	zcaron	zdotaccent	germandbls	eth			

Uppercase cyrillic

А	Б	В	Г	Ґ	Г	Д	Е	È	Ë	Ж	З	И	Й	Ў
A-cy	Be-cy	Ve-cy	Ge-cy	Gje-cy	Gheupturn-cy	De-cy	Ie-cy	legrave-cy	lo-cy	Zhe-cy	Ze-cy	li-cy	lishort-cy	lishorttail-cy
Й	К	Ќ	Л	М	Н	О	П	Р	С	Т	У	Ў́	Ф	Х
ligrave-cy	Ka-cy	Kje-cy	El-cy	Em-cy	En-cy	O-cy	Pe-cy	Er-cy	Es-cy	Te-cy	U-cy	Ushort-cy	Ef-cy	Ha-cy
Ч	Ц	Ш	Щ	Ц	Ь	Ъ	Ы	Ль	Нь	Ѕ	Є	Э	І	İ
Che-cy	Tse-cy	Sha-cy	Shcha-cy	Dzhe-cy	Softsign-cy	Hardsign-cy	Yeru-cy	Lje-cy	Nje-cy	Dze-cy	E-cy	Ereversed-cy	I-cy	Yi-cy
Ј	Ћ	Ю	Я	Ђ	Ђ	Ө	Ѹ	ƒ	Ђ	Ж	З	Қ	К	К
Je-cy	Tshe-cy	Iu-cy	Ia-cy	Dje-cy	Yat-cy	Fita-cy	Izhitsa-cy	Ghestroke	Ghemiddleh	Zhedescender	Zedescender	Kadescender	Kavertikalstr	Kastroke
К	Ң	Ң	Ң	Ң	Ң	Ң	Ң	Ң	Ң	Ң	Ң	Ң	Ң	Ң
Kabashkir-cy	Endescender	Enghe-cy	Pemiddlehook	Pedescender	Haabkhasian	Esdescender	Tedescender	Ustrait-cy	Ustraitstroke	Hadescender	Tetse-cy	Chedescender	Cheverticalstr	Shha-cy
Ң	Ң	Ң	Ң	Ң	Ң	Ң	Ң	Ң	Ң	Ң	Ң	Ң	Ң	Ң
Shhadesc	Cheabkhasian	Chedescabkh	Palochka-cy	Zhebreve-cy	Kahook-cy	Eltail-cy	Enhook-cy	Entail-cy	Chekhakassian	Emtail-cy	Abreve-cy	Adieresis-cy	Aie-cy	lebreve-cy
Ө	Ӗ	Ӗ	Ӗ	Ӗ	Ӗ	Ӗ	Ӗ	Ӗ	Ӗ	Ӗ	Ӗ	Ӗ	Ӗ	Ӗ
Schwa-cy	Schwadieresis	Zhedieresis	Zedieresis	Dzeabkhasian	Imacron-cy	Idieresis-cy	Odieresis-cy	Obarred-cy	Obarreddieres	Edieresis-cy	Umacron-cy	Udieresis-cy	Uhungaruml	Chedieresis-cy
Ң	Ң	Ң	Ң	Ң	Ң	Ң	Ң							
Gedescender	Yerudieresis	Hahook-cy	Reversedze-cy	Elhook-cy	We-cy	Semisoftsign	Ertick-cy							

Lowercase cyrillic

а	б	в	г	ѓ	ґ	д	е	è	ë	ж	з	и	й	ѣ
a-cy	be-cy	ve-cy	ge-cy	gje-cy	gheupturn-cy	de-cy	ie-cy	iegrave-cy	io-cy	zhe-cy	ze-cy	ii-cy	iishort-cy	iishorttail-cy
й	к	ќ	л	м	н	о	п	р	с	т	у	ў	ф	х
iigrave-cy	ka-cy	kje-cy	el-cy	em-cy	en-cy	o-cy	pe-cy	er-cy	es-cy	te-cy	u-cy	ushort-cy	ef-cy	ha-cy
ч	ц	ш	щ	џ	ь	ъ	ы	лъ	нь	ѕ	є	э	і	ї
che-cy	tse-cy	sha-cy	shcha-cy	dzhe-cy	softsign-cy	hardsign-cy	yeru-cy	lje-cy	nje-cy	dze-cy	e-cy	ereversed-cy	i-cy	yi-cy
ј	ћ	ю	я	ђ	ѝ	ѳ	ѵ	ѣ	ђ	џ	џ	џ	к	к
je-cy	tshe-cy	iu-cy	ia-cy	dje-cy	yat-cy	fita-cy	izhitsa-cy	ghestroke	ghemiddleh	zhedescender	zedescender	kadescender	kaverticestr	kastroke
к	ң	н	њ	ц	Ѡ	ѡ	т	ү	ұ	х	ц	ч	ч	h
kabashkir-cy	endescender	enghe-cy	pemiddlehook	pedescender	haabkhasian	esdescender	tedescender	ustrait-cy	ustraitstroke	hadescender	tetse-cy	chedescender	cheverticalstr	shha-cy
һ	е	е	і	ж	к	л	н	ң	ч	м	ă	ä	æ	ě
shhadesc	cheabkhasian	chedescabkh	palochka-cy	zhebreve-cy	kahook-cy	eltail-cy	enhook-cy	entail-cy	chekhakassian	emtail-cy	abreve-cy	adieresis-cy	aie-cy	iebreve-cy
ə	ë	ж	з	з	й	й	ö	ө	ë	ë	ū	ü	ú	č
schwa-cy	schwadieresis	zhedieresis	zedieresis	dzeabkhasian	imacron-cy	idieresis-cy	odieresis-cy	obarred-cy	obarreddieres	edieresis-cy	umacron-cy	udieresis-cy	uhungaruml	chedieresis-cy
ґ	і	х	ε	л	w	ѝ	р							
gedescender	yerudieresis	hahook-cy	reversedze-cy	elhook-cy	we-cy	semisoftsign	ertick-cy							

Other

,	;	:	-	!	¡	?	¿	‘	’	“	”	,
comma	semicolon	colon	period	ellipsis	hyphen	exclam	exclamdown	question	questiondown	quoteleft	quoteright	quotedblleft	quotedblright	quotingsgl
„	<	>	«	»	’	/		—	—	•	()	[]
quotedblbase	guilsingleft	guilsingright	guillemetlef	guillemetri	apostrophe	slash	bar	endash	emdash	bullet	parenleft	parenright	bracketleft	bracketright
{	}	†	‡		\	_	’	”	&	@	©	®	™	\$
braceleft	braceright	dagger	daggerdbl	brokenbar	backslash	underscore	quotesingle	quotedbl	ampersand	at	copyright	registered	trademark	dollar
¢	£	f	¥	€	₪	฿	₪	₴	₺	₽	₹	₸	₮	₩
cent	sterling	florin	yen	euro	currency	baht	bitcoin	hryvnia	lira	ruble	rupee	tenge	tugrik	won
/	¼	½	¾	⅓	⅔	⅛	⅜	⅝	⅞	%	‰	∅	0	1
fraction	onequarter	onehalf	threequarte	onethird	twothird	oneeighth	threeeighth	fiveeighth	seveeneighth	percent	perthousan	zero.zero	zero	one
2	3	4	5	6	7	8	9	μ	Δ	Ω	π	•	*	+
two	three	four	five	six	seven	eight	nine	mu	Delta	Omega	pi	periodcent	asterisk	plus
-	±	×	÷	=	<	>	°	≈	≥	∞	≤	¬	≠	∫
minus	plusminus	multiply	divide	equal	less	greater	degree	approxsequ	greaterequ	infinity	lessequal	logicalnot	notequal	integral
∂	∏	√	∑	◊	¶	§	^	~	∅	Ω	Δ	μ	#	№
partialdiff	product	radical	summation	lozenge	paragraph	section	asciicircum	asciitilde	emtyset	Ohm	increment	micro	numbersign	numero
☺	↑	↗	→	↘	↓	↙	←	↖	♀	♂	◐	●	○	ℓ
apple	upArrow	NEArrow	rightArrow	SEArrow	downArrow	SWArrow	leftArrow	NWArrow	ordfeminine	ordmasculine	estimated	blackCircle	whiteCircle	literSign

Grilli Type

Other

0	1	2	3	4	5	6	7	8	9	0	1	2	3	4
zero.blackCir	one.blackCir	two.blackCir	three.blackCir	four.blackCir	five.blackCir	six.blackCir	seven.blackCir	eight.blackCir	nine.blackCir	zero.circled	one.circled	two.circled	three.circled	four.circled
5	6	7	8	9										
five.circled	six.circled	seven.circled	eight.circled	nine.circled										

Alternates latin

Ă	Ĕ	Ŏ	Ū	Ÿ	Ý	ÿ	a	á	ă	â	ä	à	ā	ą
Adieresis	Edieresis	Odieresis	Udieresis	Y.ss02	Yacute.ss02	Ycircumflex	a.ss03	aacute.ss03	abreve.ss03	acircumflex	adieresis.s	agrave.ss03	amacron.s	aogonek.s
å	ã	y	ý	ÿ	ÿ	ÿ								
aring.ss03	atilde.ss03	y.ss04	yacute.ss04	ycircumflex.	ydieresis	yacute.ss04								

Alternates cyrillic

Д	Λ	İ	В	з	g	ж	з	u	ŭ	k	Λ	n	m	ұ
De-cy.locl	El-cy.locl	Yi-cy.locl	ve-cy.locl	ge-cy.locl	de-cy.locl	zhe-cy.locl	ze-cy.locl	ii-cy.locl	iishort-cy	ka-cy.locl	el-cy.locl	pe-cy.locl	te-cy.locl	tse-cy.locl
ш	щ	ю	б	a	ȳ	ÿ	ý	ï						
sha-cy.locl	shcha-cy	iu-cy.locl	be-cy.locl	a-cy.ss03	umacron-cy	udieresis-cy	uhungaruml	yi-cy.locl						

GT Walsheim

Technical Specifications

Latin-alphabet languages:

Abenaki, Afaan, Afar, Afrikaans, Albanian, Alsatian, Amis, Anuta, Aragonese, Aranese, Aromanian, Arrernte, Arvanitic, Asturian, Atayal, Aymara, Azerbaijani, Bashkir, Basque, Belarusian, Bemba, Bikol, Bislama, Bosnian, Breton, Cape Verdean Creole, Catalan, Cebuano, Chamorro, Chavacano, Chichewa, Chickasaw, Cimbrian, Cofán, Cornish, Corsican, Creek, Crimean Tatar, Croatian, Czech, Danish, Dawan, Delaware, Dholuo, Drehu, Dutch, English, Estonian, Faroese, Fijian, Filipino, Finnish, French, Frisian, Friulian, Gagauz, Galician, Ganda, Genoese, German, Gikuyu, Gooniyandi, Greenlandic (Kalaallisut), Guadeloupean Creole, Gwich'in, Haitian Creole, Hän, Hawaiian, Hiligaynon, Hopi, Hotçak, Hungarian, Icelandic, Ido, Igbo, Ilocano, Indonesian, Irish, Istro-Romanian, Italian, Jamaican, Javanese, Jèrriais, Kaingang, Kala Lagaw Ya, Kapampangan, Kaqchikel, Karakalpak, Karelian, Kashubian, Kikongo, Kinyarwanda, Kiribati, Kirundi, Kurdish, Ladin, Latin, Latvian, Lithuanian, Lombard, Low Saxon, Luxembourgish, Maasai, Makhuwa, Malay, Maltese, Manx, Māori, Marquesan, Megleno-Romanian, Meriam Mir, Mirandese, Mohawk, Moldovan, Montagnais, Montenegrin, Murrinh-Patha, Nagamese Creole, Nahuatl, Ndebele, Neapolitan, Ngyambaa, Niuean, Noongar, Norwegian, Occitan, Old Icelandic, Old Norse, Oshiwambo, Ossetian, Palauan, Papiamentu, Piedmontese, Polish, Portuguese, Potawatomi, Q'eqchi', Quechua, Rarotongan, Romanian, Romansh, Rotokas, Inari Sami, Lule Sami, Northern Sami, Southern Sami, Samoan, Sango, Saramaccan, Sardinian, Scottish Gaelic, Serbian, Seri, Seychellois Creole, Shawnee, Shona, Sicilian, Silesian, Slovak, Slovenian, Somali, Upper and Lower Sorbian, Northern and Southern Sotho, Spanish, Sranan, Sundanese, Swahili, Swazi, Swedish, Tagalog, Tahitian, Tetum, Tok Pisin, Tokelauan, Tongan, Tshiluba, Tsonga, Tswana, Tumbuka, Turkish, Turkmen, Tuvaluan, Tzotzil, Uzbek, Venetian, Vepsian, Võro, Wallisian, Walloon, Waray-Waray, Warlpiri, Wayuu, Welsh, Wik-Mungkan, Wiradjuri, Wolof, Xavante, Xhosa, Yapese, Yindjibarndi, Zapotec, Zarma, Zazaki, Zulu, Zuni

Cyrillic-alphabet languages:

Abaza, Abkhazian, Adyghe, Aghul, Altaic, Avar, Azeri, Bashkir, Balkar, Belarusian, Bosnian, Bulgarian, Buryat, Chechen, Chukchi, Chuvash, Crimean Tatar, Dargin, Dargwa, Dolgan, Dungan, Enets, Erzya, Even, Evenki, Eskimo (Yupik), Ingush, Kabardian, Kalmyk, Karachay, Karakalpak, Kazakh, Khinalugh, Kirghiz, Komi-Zyrian, Komi-Permyak, Koryak, Kryashen Tatar, Kumyk, Kurdish, Khakass, Kyrgyz, Lak, Lezgian, Macedonian, Mari-High, Moldovan, Mongolian, Mordvin-Moksha, Nanai, Negidal'skij, Nogai, Ossetian, Russian, Rusyn, Rutul, Serbian, Shor, Tabasaran, Tajik, Talysh,

Tat, Tatar Volgaic, Tofalar, Touva (Soyot), Turkmen, Tuvan, Tsakhur, Udmurt, Uzbek, Uyghur, Ukrainian, Ulch, Uzbek

File Formats

Desktop: OTF
Web: WOFF2, WOFF, TTF
App: OTF

Licensing

Free Trial Fonts License
Trial fonts allow you to play with our fonts at no cost. You can use them to create mockups before getting client approval. Students can use them for non-commercial university projects, too.

Desktop License

This license is used for creating printed documents, logos, website graphics, and so on. Desktop fonts are licensed for a certain number of computers in your organization.

Webfont License

This license is what you purchase to use our typefaces on websites with the @font-face technology. You may use them for website mockups. Webfonts are licensed for a certain number of website visitors per month.

App License

This is the license to embed fonts in mobile and desktop applications. App licensing for our fonts is offered for a certain number of developers.

Further licensing types on request.

About GrilliType

Grilli Type is an independent Swiss type foundry. We offer original retail and custom typefaces, high quality products with a contemporary aesthetic in the Swiss tradition. This tradition is reflected in the visual but also the technical standard of our fonts and our service. Together with our designers we create useful, high quality typefaces that stand the test of time.

Contact

mail@grillitype.com
www.grillitype.com

15pt GT Walsheim Ultra Light

One has a fantastic view of the world's most photographed mountain from the Klein-Matterhorn, which is only separated from the

20pt GT Walsheim Ultra Light

First the glaciers, then the brooks have shaped the breathtaking rock formation from the 200 mil-

30pt GT Walsheim Ultra Light

A spring, the "Fontaine Froide", has its source in the middle of a sink-

40pt GT Walsheim Ultra Light

Another natural wonder in the immediate vicini-

65pt GT Walsheim Ultra Light

Walensee

95pt GT Walsheim Ultra Light

Biemme

120pt GT Walsheim Ultra Light

Rhein

160pt GT Walsheim Ultra Light

1931

130pt GT Walsheim Ultra Light

HISTORICAL

140pt GT Walsheim Ultra Light

St. Moritz

160pt GT Walsheim Ultra Light

Schnee

15pt GT Walsheim Thin

It contains three basic topographical areas: the Swiss Alps to the south, the Swiss Plateau or Central Plateau, and the Jura

20pt GT Walsheim Thin

hydrographic network includes several of the largest bodies of freshwater in Central and

30pt GT Walsheim Thin

The largest lake is Lake Geneva, in western Switzerland shared

40pt GT Walsheim Thin

French Camargue region and the Rhine flows

65pt GT Walsheim Thin

Grischun

95pt GT Walsheim Thin

Mönch

120pt GT Walsheim Thin

Säntis

160 GT Walsheim Thin

Leuk

130pt GT Walsheim Thin

JUNGFRAU

140pt GT Walsheim Thin

Timetable

160pt GT Walsheim Thin

Genève

15pt GT Walsheim Light

48 of Switzerland's mountains are 4000 metres above sea in altitude or higher. At 4634 m, Monte Rosa is the highest,

20pt GT Walsheim Light

The Bernese Alps above the deep glacial Lauterbrunnen valley, containing 72 waterfalls,

30pt GT Walsheim Light

The more populous northern part of the country, comprising

40pt GT Walsheim Light

The less humid winters in the mountains may

65pt GT Walsheim Light

Le Cervin

95pt GT Walsheim Light

Lavaux

120pt GT Walsheim Light

Flims

160pt GT Walsheim Light

SBB

130pt GT Walsheim Light

ST. GALLLEN

140pt GT Walsheim Light

Briissago

160pt GT Walsheim Light

Luggano

15pt GT Walsheim Regular

A weather phenomenon known as the föhn (with an identical effect to the chinook wind) can occur at all times of the year and

20pt GT Walsheim Regular

Alps during rainfall periods on the southern face of the Alps. This works both ways across

30pt GT Walsheim Regular

Large alpine areas such as Graubünden remain drier than

40pt GT Walsheim Regular

Valleys running south to north trigger the best

65pt GT Walsheim Regular

Clachan

95pt GT Walsheim Regular

Vallada

120pt GT Walsheim Regular

RENO

160pt GT Walsheim Regular

Wil

130pt GT Walsheim Regular

Obergoms

140pt GT Walsheim Regular

BASILEA

160pt GT Walsheim Regular

Transit

15pt GT Walsheim Medium

Because the many delicate valleys separated by high mountains often form unique ecologies. The mountainous regions them-

20pt GT Walsheim Medium

The climatic, geological and topographical conditions of the alpine region make for a

30pt GT Walsheim Medium

Switzerland ranks first among 132 nations in safeguarding the envi-

40pt GT Walsheim Medium

Its heavy reliance on renewable sources of

65pt GT Walsheim Medium

Bodensee

95pt GT Walsheim Medium

Davos

120pt GT Walsheim Medium

Train

160pt GT Walsheim Medium

1291

130pt GT Walsheim Medium

Winterthur

140pt GT Walsheim Medium

Villaggio

160pt GT Walsheim Medium

Rivières

15pt GT Walsheim Bold

The Federal Constitution adopted in 1848 is the legal foundation of the modern federal state. It is among the oldest con-

20pt GT Walsheim Bold

A new Constitution was adopted in 1999, but did not introduce notable changes to

30pt GT Walsheim Bold

It outlines basic and political rights of individuals and citi-

40pt GT Walsheim Bold

There are three main governing bodies on

65pt GT Walsheim Bold

Montreux

95pt GT Walsheim Bold

Emmen

120pt GT Walsheim Bold

Aare

160pt GT Walsheim Bold

Sihl

130pt GT Walsheim Bold

Neuchâtel

140pt GT Walsheim Bold

HORGEN

160pt GT Walsheim Bold

Perron

15pt GT Walsheim Black

In 2013, the languages most spoken at home among permanent residents aged 15 and older were Swiss German,

20pt GT Walsheim Black

The federal government is obliged to communicate in the official languages,

30pt GT Walsheim Black

The role played by dialects in each linguistic region varies

40pt GT Walsheim Black

While in the Italian-speaking regions

65pt GT Walsheim Black

Rheintal

95pt GT Walsheim Black

Motor

120pt GT Walsheim Black

1917

160pt GT Walsheim Black

CFF

130pt GT Walsheim Black

Gotthard

140pt GT Walsheim Black

Bun di!

160pt GT Walsheim Black

Cargo

15pt GT Walsheim Ultra Bold

Switzerland has no official state religion, though most of the cantons (except Geneva and Neuchâtel) rec-

20pt GT Walsheim Ultra Bold

with a complex patchwork of majorities over most of the country. Geneva

30pt GT Walsheim Ultra Bold

It became known internationally as the Protestant

40pt GT Walsheim Ultra Bold

One canton, Appenzell, was officially

65pt GT Walsheim Ultra Bold

ALPINE

95pt GT Walsheim Ultra Bold

Citad

120pt GT Walsheim Ultra Bold

Laax

160pt GT Walsheim Ultra Bold

Val

130pt GT Walsheim Ultra Bold

Jet d'eau

140pt GT Walsheim Ultra Bold

Piz Fess

160pt GT Walsheim Ultra Bold

Tessin

15pt GT Walsheim Condensed Ultra Light

The linguistically isolated Romansh culture in Graubünden in eastern Switzerland constitutes an exception, it survives only in the upper valleys of the

20pt GT Walsheim Condensed Ultra Light

Some 1000 museums are distributed through the country; the number has more than tripled since 1950.

30pt GT Walsheim Condensed Ultra Light

The SNA supplies almost all Swiss media and a couple dozen foreign media services

40pt GT Walsheim Condensed Ultra Light

While some dishes such as fondue, raclette or rösti are

65pt GT Walsheim Condensed Ultra Light

Lac Léman

95pt GT Walsheim Condensed Ultra Light

Railway

120pt GT Walsheim Condensed Ultra Light

Pilatus

160pt GT Walsheim Condensed Ultra Light

Chur

130pt GT Walsheim Condensed Ultra Light

Finsteraarhorn

140pt GT Walsheim Condensed Ultra Light

Le Lac Bleu

160pt GT Walsheim Condensed Ultra Light

Lake Thun

15pt GT Walsheim Condensed Thin

The current shape of the mountain is the result of cirque erosion due to multiple glaciers diverging from the peak, such as the Matterhorn Glacier at

20pt GT Walsheim Condensed Thin

Since the end of the 19th century, when railways were built in the area, it has attracted increasing numbers

30pt GT Walsheim Condensed Thin

Many trekkers also undertake the 10-day-long circuit around the mountain. The

40pt GT Walsheim Condensed Thin

On Münster's topographical chart this group is marked un-

65pt GT Walsheim Condensed Thin

Halwilersee

95pt GT Walsheim Condensed Thin

Limmat

120pt GT Walsheim Condensed Thin

Glarus

160pt GT Walsheim Condensed Thin

Nidau

130pt GT Walsheim Condensed Thin

LENZERRHORN

140pt GT Walsheim Condensed Thin

Unterseen

160pt GT Walsheim Condensed Thin

Mountain

15pt GT Walsheim Condensed Light

Peter Taugwalder and his son of the same name, on 14 July 1865. Douglas, Hudson, Hadow and Croz were killed on the descent when Hadow slipped and

20pt GT Walsheim Condensed Light

The name appeared first as Zur Matte (“at the meadow”) and became later Zermatt. It does not appear until 1495

30pt GT Walsheim Condensed Light

Many hamlets are located in the valleys above Zermatt, however they are not

40pt GT Walsheim Condensed Light

Of this area, about 9,4% is used for agricultural purposes,

65pt GT Walsheim Condensed Light

Lej da Segl

95pt GT Walsheim Condensed Light

Konstanz

120pt GT Walsheim Condensed Light

Traffic

160pt GT Walsheim Condensed Light

Casa

130pt GT Walsheim Condensed Light

Romainmôtier

140pt GT Walsheim Condensed Light

TURISMO

160pt GT Walsheim Condensed Light

Zermatt

15pt GT Walsheim Condensed Regular

The most commonly heard musical instruments include the “Schwyzerörgeli” (accordion), the violin, bass violin, clarinet and, in certain regions,

20pt GT Walsheim Condensed Regular

The alphorn is regarded as a typically Swiss instrument. The warm sounds of this original instrument

30pt GT Walsheim Condensed Regular

If you tend to forget the words when you are singing, you should try natural

40pt GT Walsheim Condensed Regular

There are a number of local groups devoted to Ländler

65pt GT Walsheim Condensed Regular

ZYTGLOGGE

95pt GT Walsheim Condensed Regular

Kander

120pt GT Walsheim Condensed Regular

Glacier

160pt GT Walsheim Condensed Regular

Thun

130pt GT Walsheim Condensed Regular

Verkehrshaus

140pt GT Walsheim Condensed Regular

COGWHHEEL

160pt GT Walsheim Condensed Regular

Interlaken

15pt GT Walsheim Condensed Medium

The production of cheese in the summer enabled people to preserve milk and stockpile it for the long winter months. The practice of Alpine farming

20pt GT Walsheim Condensed Medium

Chästeilet cheese sharing – traditions that have been carefully maintained to this day. From a dis-

30pt GT Walsheim Condensed Medium

Cow bells, a blade of grass in the mouth, unlimited nature, sunsets

40pt GT Walsheim Condensed Medium

From the end of May the herdsmen and their cattle

65pt GT Walsheim Condensed Medium

Matterhorn

95pt GT Walsheim Condensed Medium

Gondola

120pt GT Walsheim Condensed Medium

Viafier

160pt GT Walsheim Condensed Medium

Linth

130pt GT Walsheim Condensed Medium

Zahnradbahn

140pt GT Walsheim Condensed Medium

Leukerbad

160pt GT Walsheim Condensed Medium

ROTHORN

15pt GT Walsheim Condensed Bold

For a long time, Swiss sports customs were eclipsed by international types of sport – but recently, they have come back into their

20pt GT Walsheim Condensed Bold

While regional and local sporting traditions have often been neglected, there are some sports

30pt GT Walsheim Condensed Bold

Major events such as the Swiss Wrestling and Alpine Festival ESAF are

40pt GT Walsheim Condensed Bold

At these multi-day festive occasions, athletic wrestlers,

60pt GT Walsheim Condensed Bold

Andermatt

95pt GT Walsheim Condensed Bold

Ski lift

120pt GT Walsheim Condensed Bold

Doubs

160pt GT Walsheim Condensed Bold

Hike

130pt GT Walsheim Condensed Bold

Wildstrubel

140pt GT Walsheim Condensed Bold

Postal Car

160pt GT Walsheim Condensed Bold

GSTAAD

15pt GT Walsheim Condensed Black

In earlier times the Alpine herdsmen and farmers would show off their strength in bouts of wrestling at festivals. Now the sport

20pt GT Walsheim Condensed Black

The festivals celebrated in Switzerland differ considerably depending on the season and

30pt GT Walsheim Condensed Black

Many of them reflect the course of the agricultural year, such as

40pt GT Walsheim Condensed Black

Because there was less for farmers to do in

60pt GT Walsheim Condensed Black

Münster

95pt GT Walsheim Condensed Black

RHONE

120pt GT Walsheim Condensed Black

Arosa

160pt GT Walsheim Condensed Black

Golf

130pt GT Walsheim Condensed Black

LAKE BIEL

140pt GT Walsheim Condensed Black

Montreux

160pt GT Walsheim Condensed Black

4505 m

15pt GT Walsheim Condensed Ultra Bold

**There are not festivals in every season
all over Switzerland - but there are
festivals in every season somewhere**

20pt GT Walsheim Condensed Ultra Bold

**The traditions of wintertime
could not be more diverse,
with Christmas as a time of**

30pt GT Walsheim Condensed Ultra Bold

**Locals and foreign
visitors also have
an opportunity here**

40pt GT Walsheim Condensed Ultra Bold

**Today, 95% of
Swiss watches
are destined for**

60pt GT Walsheim Condensed Ultra Bold

Saas-Fee

95pt GT Walsheim Condensed Ultra Bold

Cham

120pt GT Walsheim Condensed Ultra Bold

Heidi

160pt GT Walsheim Condensed Ultra Bold

URI

130pt GT Walsheim Condensed Ultra Bold

Cableway

140pt GT Walsheim Condensed Ultra Bold

Grimmsel

160pt GT Walsheim Condensed Ultra Bold

Swatch

15pt GT Walsheim Ultra Light

Альпы представляют собой сложную систему хребтов и массивов, протянувшуюся выпуклой к северо-западу дугой от Лигу-

20pt GT Walsheim Ultra Light

моря до Среднедунайской низменности. Альпы располагаются на территории 8 стран: Фран-

30pt GT Walsheim Ultra Light

Монако, Италии, Швейцарии, Германии, Австрии, Лихтенштейн-

40pt GT Walsheim Ultra Light

Общая длина альпийской дуги составляет око-

65pt GT Walsheim Ultra Light

Цюрихские

95pt GT Walsheim Ultra Light

Тессин

120pt GT Walsheim Ultra Light

Поезд

160pt GT Walsheim Ultra Light

Тунн

130pt GT Walsheim Ultra Light

Обвальден

140pt GT Walsheim Ultra Light

Востоке

160pt GT Walsheim Ultra Light

СТРАНЫ

15pt GT Walsheim Thin

Самой высокой вершиной Альп является гора Монблан с высотой 4810 метров над уровнем моря, расположенная на границе

20pt GT Walsheim Thin

Всего в Альпах сосредоточено около 100 вершин-четырёхтысячников. Альпы являются меж-

30pt GT Walsheim Thin

Туризм в Альпах начал активно развиваться в XX веке и получил

40pt GT Walsheim Thin

большой толчок после окончания Второй Ми-

65pt GT Walsheim Thin

Альтдорф

95pt GT Walsheim Thin

Монах

120pt GT Walsheim Thin

Снег

160 GT Walsheim Thin

Дева

130pt GT Walsheim Thin

Платформа

140pt GT Walsheim Thin

Локарно

160pt GT Walsheim Thin

Женева

15pt GT Walsheim Light

Пять стран из восьми (Швейцария, Франция, Италия, Австрия и Германия) были хозяйками Зимних Олимпийских игр, кото-

20pt GT Walsheim Light

Несмотря на активное развитие туризма, в альпийском регионе по-прежнему суще-

30pt GT Walsheim Light

традиционная культура, включая сельское хозяйство, деревоо-

40pt GT Walsheim Light

Благодаря расположению в центре Запад-

65pt GT Walsheim Light

Лозанна

95pt GT Walsheim Light

Цюрих

120pt GT Walsheim Light

Берн

160pt GT Walsheim Light

Веве

130pt GT Walsheim Light

Винтертур

140pt GT Walsheim Light

Золотурн

160pt GT Walsheim Light

ЛУГАНЮ

15pt GT Walsheim Regular

Альпы являются одной из наиболее изученных горных систем. Многие понятия названы по имени Альп, в частности, аль-

20pt GT Walsheim Regular

период альпийской складчатости, альпийский тип рельефа, альпийские луга, альпи-

30pt GT Walsheim Regular

Единогласно принятого мнения по происхождению назва-

40pt GT Walsheim Regular

По одной из версий, латинское слово

65pt GT Walsheim Regular

Женева

95pt GT Walsheim Regular

Монте

120pt GT Walsheim Regular

Виль

160pt GT Walsheim Regular

Рейн

130pt GT Walsheim Regular

Вильнёв

140pt GT Walsheim Regular

ТРАНЗИТ

160pt GT Walsheim Regular

Раклетт

15pt GT Walsheim Medium

от Albus (Белый), использовалось ещё в I веке до нашей эры для обозначения гор, покрытых снегом. Другое предположение

20pt GT Walsheim Medium

что название произошло от слов Al или Ar, что означало высокогорную местность.

30pt GT Walsheim Medium

Слово Alpe в современном французском и итальянском языках

40pt GT Walsheim Medium

Слово Alpeis, или Alpes, использовалось

65pt GT Walsheim Medium

Марках

95pt GT Walsheim Medium

Только

120pt GT Walsheim Medium

АРАУ

160pt GT Walsheim Medium

1648

130pt GT Walsheim Medium

Невшатель

140pt GT Walsheim Medium

Деревня

160pt GT Walsheim Medium

БАЗЕЛЬ

15pt GT Walsheim Bold

гор и горных массивов учёными Древней Греции и Древней Византии. В частности, Прокопий Кесарийский, визан-

20pt GT Walsheim Bold

VI века, называет в своих сочинениях Альпы и Пиренеи одним названием,

30pt GT Walsheim Bold

В неизменном виде это слово сохранилось в современном

40pt GT Walsheim Bold

В кельтском языке также присутствова-

65pt GT Walsheim Bold

Монтрё

95pt GT Walsheim Bold

Эммен

120pt GT Walsheim Bold

Даре

160pt GT Walsheim Bold

КУР

130pt GT Walsheim Bold

Двигатель

140pt GT Walsheim Bold

Фрибур

160pt GT Walsheim Bold

Цюрих

15pt GT Walsheim Black

Далее оно трансформировалось в английское Alps. Предположительно, к кельтам оно попало из Римской

20pt GT Walsheim Black

Европейские учёные начали проявлять интерес к изучению происхождения

30pt GT Walsheim Black

Альпы были первой горной цепью, которую начали

40pt GT Walsheim Black

В середине XIX века для объяснения

65pt GT Walsheim Black

Оладьи

95pt GT Walsheim Black

РЕКА

120pt GT Walsheim Black

Биль

160pt GT Walsheim Black

Ток

130pt GT Walsheim Black

СМОТРЕТЬ

140pt GT Walsheim Black

ПРОБЕГ

160pt GT Walsheim Black

СЬОН

15pt GT Walsheim Ultra Bold

В середине XIX века для объяснения наличия «сложения» горных цепей была использована теория

20pt GT Walsheim Ultra Bold

В середине 60-х годов XX века ей на смену пришла теория тектоники плит,

30pt GT Walsheim Ultra Bold

Эта теория дала основу текущему пониманию эво-

40pt GT Walsheim Ultra Bold

региона Процесс формирования гор-

65pt GT Walsheim Ultra Bold

Озеро

95pt GT Walsheim Ultra Bold

Город

120pt GT Walsheim Ultra Bold

Лакс

160pt GT Walsheim Ultra Bold

ИЗ

130pt GT Walsheim Ultra Bold

Фонтан

140pt GT Walsheim Ultra Bold

Птицы

160pt GT Walsheim Ultra Bold

Ньон

15pt GT Walsheim Condensed Ultra Light

Анализ старейших горных пород в глубине Альп, в частности, циркония, показывает, что они начали формироваться в конце протерозойского — начале

20pt GT Walsheim Condensed Ultra Light

Также на территории Альп иногда попадаются окаменелости кембрийского периода. В это же время нача-

30pt GT Walsheim Condensed Ultra Light

материков Гондвана и Лавразия. До пермского периода шло преимуще-

40pt GT Walsheim Condensed Ultra Light

горных пород, которые сейчас залегают глубоко

65pt GT Walsheim Condensed Ultra Light

До свидания

95pt GT Walsheim Condensed Ultra Light

Хорошо

120pt GT Walsheim Condensed Ultra Light

Алло!

160pt GT Walsheim Condensed Ultra Light

СЕМЬ

130pt GT Walsheim Condensed Ultra Light

Санкт-Мориц

140pt GT Walsheim Condensed Ultra Light

Отсылка

160pt GT Walsheim Condensed Ultra Light

Реклама

15pt GT Walsheim Condensed Thin

Образование суперконтинента Пангея завершилось в конце каменноугольного периода при столкновении материков Гондванаи

20pt GT Walsheim Condensed Thin

Будущие Альпы находились в месте столкновения двух тектонических плит, при этом их восточная

30pt GT Walsheim Condensed Thin

часть оказалась под водой, на дне древнего океана Палеотетиса. Раннеперм-

40pt GT Walsheim Condensed Thin

период характеризовался повышенной вулканической

65pt GT Walsheim Condensed Thin

Шоколад

95pt GT Walsheim Condensed Thin

Фондю

120pt GT Walsheim Condensed Thin

Улица

160pt GT Walsheim Condensed Thin

Газон

130pt GT Walsheim Condensed Thin

Покатость

140pt GT Walsheim Condensed Thin

Альпинизм

160pt GT Walsheim Condensed Thin

Часовня

15pt GT Walsheim Condensed Light

что привело, совместно с влиянием ветров и осадков, к разрушению герцинских складчатостей. К середине триасового периода (около 220 милли-

20pt GT Walsheim Condensed Light

континентальный рифтогенез Африки и Европы породил древний океан Паратетис. В конце юрского перио-

30pt GT Walsheim Condensed Light

в результате резкого снижения уровня воды в мировом океане, Паратетис

40pt GT Walsheim Condensed Light

территории современных Южных Альп, оставив из-

65pt GT Walsheim Condensed Light

Пятница

95pt GT Walsheim Condensed Light

Обшлаг

120pt GT Walsheim Condensed Light

Кантон

160pt GT Walsheim Condensed Light

ТОМ

130pt GT Walsheim Condensed Light

Расписание

140pt GT Walsheim Condensed Light

Станция

160pt GT Walsheim Condensed Light

РАЗМЕР

15pt GT Walsheim Condensed Regular

для этой области. В это же время в сторону Европы от Африки начала двигаться Адриатическая плита, которая вызвала образование

20pt GT Walsheim Condensed Regular

впадин в Восточных Альпах. В настоящее время плита продолжает двигаться в сторону Европы, в

30pt GT Walsheim Condensed Regular

Поперечной долиной между Боденским озером и озером Комо Альпы

40pt GT Walsheim Condensed Regular

на более высокие Западные Альпы (высота до 4808 м,

65pt GT Walsheim Condensed Regular

Граница

95pt GT Walsheim Condensed Regular

Ледник

120pt GT Walsheim Condensed Regular

БЕРЕГ

160pt GT Walsheim Condensed Regular

Мост

130pt GT Walsheim Condensed Regular

МАСШТАБ

140pt GT Walsheim Condensed Regular

Величина

160pt GT Walsheim Condensed Regular

СЮЖЕТ

15pt GT Walsheim Condensed Medium

Восточные Альпы (высота до 4049 м, гора Бернина) Следует отметить, что во французской традиции вместо единых Западных Альп приня-

20pt GT Walsheim Condensed Medium

В такой модели границы между тремя частями Альп практически совпадают с государственными:

30pt GT Walsheim Condensed Medium

оказываются главным образом во Франции, Центральные — в Швейцарии,

40pt GT Walsheim Condensed Medium

Ниже приводится список основных районов Альп.

65pt GT Walsheim Condensed Medium

Маттерхорн

95pt GT Walsheim Condensed Medium

Кантон

120pt GT Walsheim Condensed Medium

Лыжа

160pt GT Walsheim Condensed Medium

бег

130pt GT Walsheim Condensed Medium

СТЕРЖЕНЬ

140pt GT Walsheim Condensed Medium

Водопад

160pt GT Walsheim Condensed Medium

Четверг

15pt GT Walsheim Condensed Bold

Следует иметь в виду, что он носит во многом условный характер, так как различные источники проводят соответствующие

20pt GT Walsheim Condensed Bold

Поперечной долиной между Боденским озером и озером Комо Альпы разделяются на

30pt GT Walsheim Condensed Bold

более низкие и широкие Восточные Альпы (высота до 4049 м, гора

40pt GT Walsheim Condensed Bold

французской традиции вместо единых Западных

60pt GT Walsheim Condensed Bold

СВИНЬЯ

95pt GT Walsheim Condensed Bold

Четыре

120pt GT Walsheim Condensed Bold

Поток

160pt GT Walsheim Condensed Bold

Вид

130pt GT Walsheim Condensed Bold

КОСТОЧКА

140pt GT Walsheim Condensed Bold

Конечно

160pt GT Walsheim Condensed Bold

Шашка

15pt GT Walsheim Condensed Black

В такой модели границы между тремя частями Альп практически совпадают с государственными: Западные Альпы ока-

30pt GT Walsheim Condensed Black

Центральные — в Швейцарии, и Восточные — в Австрии. Ниже приводится список ос-

30pt GT Walsheim Condensed Black

Следует иметь в виду, что он носит во многом условный ха-

40pt GT Walsheim Condensed Black

На север и запад от Альп располагаются

60pt GT Walsheim Condensed Black

Мюнстер

95pt GT Walsheim Condensed Black

Ничего

120pt GT Walsheim Condensed Black

Гольф

160pt GT Walsheim Condensed Black

ТРИ

130pt GT Walsheim Condensed Black

Собака

140pt GT Walsheim Condensed Black

Кантон

160pt GT Walsheim Condensed Black

4505 M

15pt GT Walsheim Condensed Ultra Bold

Климат различных альпийских регионов зависит от высоты, положения и направления ветра. Летом в Альпах

20pt GT Walsheim Condensed Ultra Bold

Утром в горах обычно солнечно, после обеда набегают облака. Зима приносит

30pt GT Walsheim Condensed Ultra Bold

Климат на северной стороне Альп более холодный и влаж-

40pt GT Walsheim Condensed Ultra Bold

Средняя температура июля — ниже +14 °C,

60pt GT Walsheim Condensed Ultra Bold

Альпы

95pt GT Walsheim Condensed Ultra Bold

Озеро

120pt GT Walsheim Condensed Ultra Bold

Сыр

160pt GT Walsheim Condensed Ultra Bold

Нет

130pt GT Walsheim Condensed Ultra Bold

Зоопарк

140pt GT Walsheim Condensed Ultra Bold

КОРОВА

160pt GT Walsheim Condensed Ultra Bold

Пока!
